



MITIGATION PLANTING

Native evergreen specimens are to be planted within both areas labeled 'Planting Mitigation'.

80% of these specimens must reach a minimum mature height of 4m within six years. This species mix allows for infill and lower specimens to fill in the understory (such as flax).

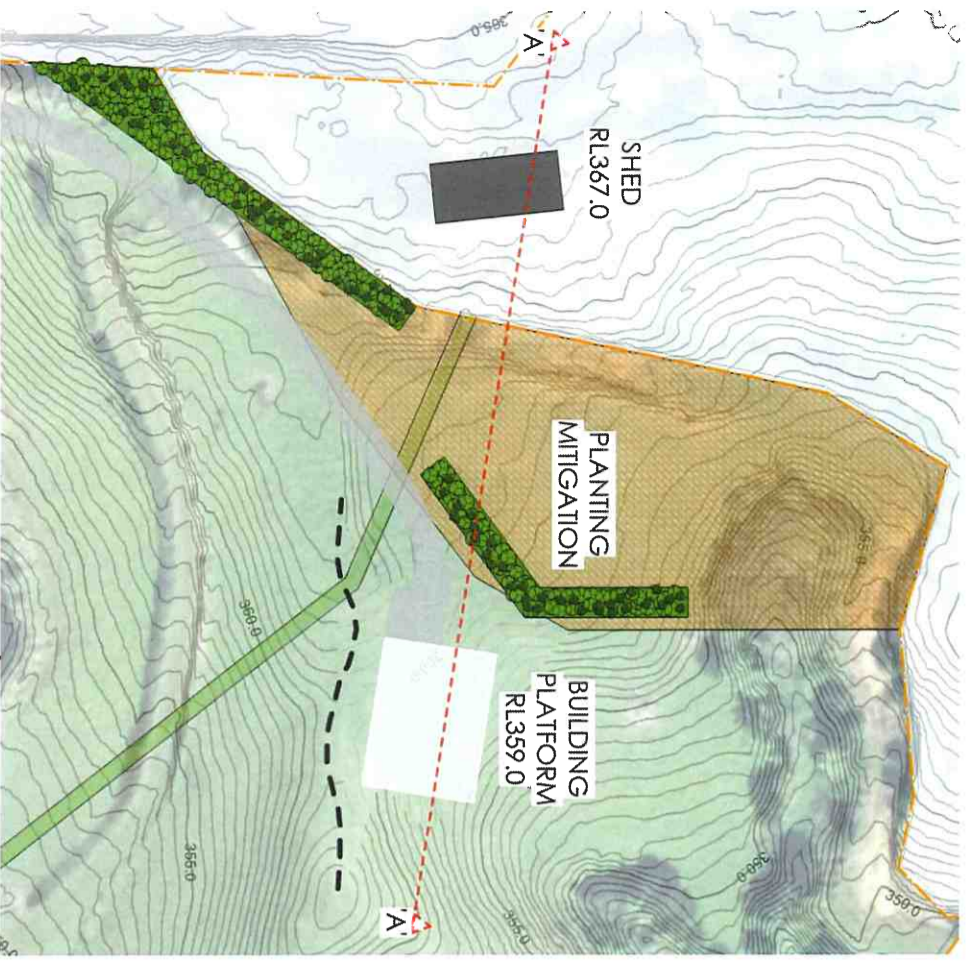
The 4m strips will contain 3 lines of planting (widening out to the south near the road). Specimens are to be planted at a maximum of 1m centres. No specimens to be planted over the easement.

Planting to be a mix of (a minimum seven species) from the following list:

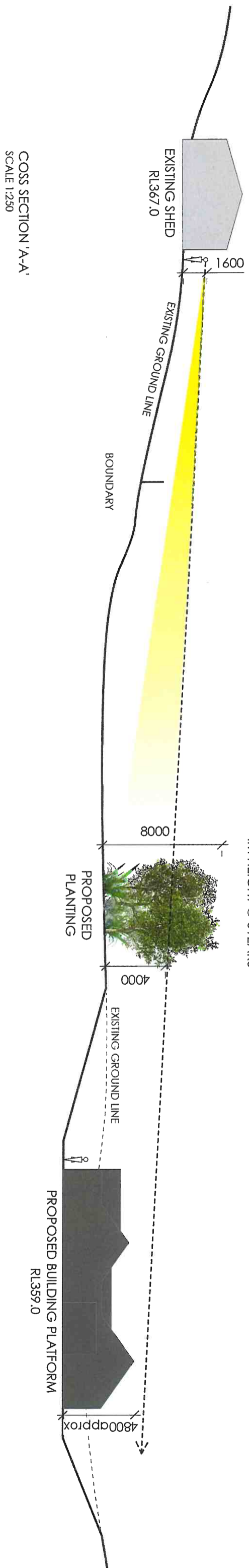
- | | |
|--------------------------|--------------------------|
| Phormium cookianum | Mountain Flax, Wharariki |
| Phormium tenax | Flax, Haraake |
| Cordyline australis | Cabbage tree, Tī kouka |
| Griselinia littoralis | Broadleaf |
| Chamaecyparis palmensis | Tree lucerne |
| Prumnophyts ferruginea | Miro |
| Vitex lucens | Puriri |
| Leprospermum scoparium | Manuka |
| Weinmannia racemosa | Kamahi |
| Pseudopanax arboreus | Five-Finger |
| Ptilosporum tenuifolium | Kohuhu |
| Ptilosporum eugeniooides | Lemonwood, Tarata |

One additional area of planting is to extend to the south of the driveway entry as a single row of specimen trees, 6 m long to screen driveway headlights from the road. Specimens to be *Griselinia littoralis* and maintained at a height no lower than 3m - (Area marked 'A' on the plan above)





SEE CROSS SECTION
BELOW



MATURE HEIGHT
(GENERALLY 8m+)
SIGHT LINE ILLUSTRATES
4m HEIGHT @ 6YEARS

