

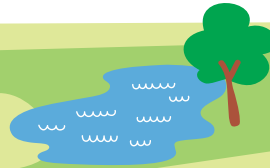


Kickstarting
The Hub -
\$50m.



Up to \$3m
to improve
Bellringer
Pavilion.

Investing more to plan
for climate change.



What's in our 10-year plan?

The Mayor and Councillors adopted our 10-year Plan in July. It sets out the priorities, projects, services and how your rates are spent as we continue towards our vision to be a Sustainable Lifestyle Capital.

- \$4.5 billion total budget
- \$1.5b – for capital works
- \$2.9b - operating costs
- 11.5% - average residential rates increase in 2024/2025



\$1b to maintain water,
stormwater, wastewater &
transport infrastructure.



Boost
Disaster
Recovery
Reserve.

Funding for
partnerships with
mana whenua.



Three-year high
frequency bus trial.



\$12m to address affordable
housing shortage.

Working together to extend
the Coastal Walkway
between Bell Block and
Waitara, and Planting Our
Place initiatives.

