

Project Notes:
 1. This design has been prepared for engagement and cost estimation.
 2. This design is still subject to Council approval.



REV No.	REVISION DESCRIPTION	BY	CHK	APPD	DATE
2	Amended to remove SH works	DJB	-	-	-
3	Addition of refuge island	DJB	-	-	-

CONSULTANT:	BY	DATE
	FIELDWORK	-
	DESIGN	-
	DRAWN	DJB Oct23
	DSG VERIFIER	-
	DWG CHECK	-
	APPROVED	-

CLIENT:	REVIEWED BY:
NPDC	-
CONTRACT No. -	DATE: -
PROJECT No. -	APPROVED BY: -
	DATE: -

Te Kaunihera-ā-Rohe o Ngāmotu
New Plymouth District Council

LOCATION / PROJECT:
 Coastal Taranaki School
 Carthew and Curtis Streets
 Ōkato

DRAWING TITLE:
**Concept Plan
 Speed Management Improvements**
 Page 1 of 4

CO-ORDINATE SYSTEM:	ORIGINAL SCALE (A1)
NZGD 2000	NTS
DATUM:	REDUCED SCALE (A3)
-	NTS

DISCIPLINE:	Civil
NPDC DRAWING No.	-
CONSULTANT DRAWING No.	-
REV.	-

DO NOT SCALE OFF DRAWING

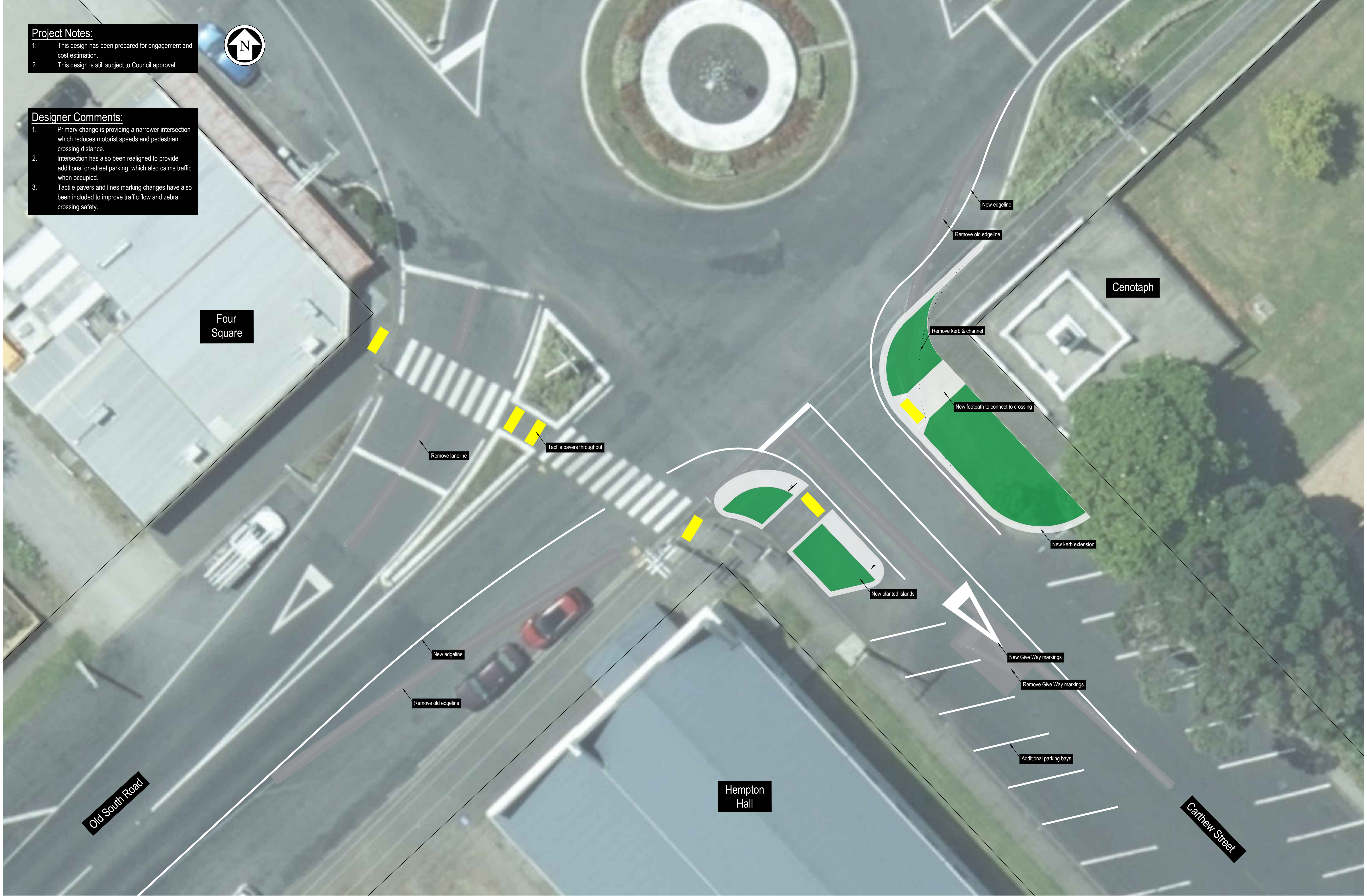
Project Notes:

- This design has been prepared for engagement and cost estimation.
- This design is still subject to Council approval.



Designer Comments:

- Primary change is providing a narrower intersection which reduces motorist speeds and pedestrian crossing distance.
- Intersection has also been realigned to provide additional on-street parking, which also calms traffic when occupied.
- Tactile pavers and lines marking changes have also been included to improve traffic flow and zebra crossing safety.



DO NOT SCALE OFF DRAWING

REV No.	REVISION DESCRIPTION	BY	CHK	APPD	DATE
2	Amended to remove SH works	DJB	-	-	-
3	Addition of refuge island	DJB	-	-	-

CONSULTANT:	BY	DATE
FIELDWORK	-	-
DESIGN	-	-
DRAWN	DJB	Oct23
DSG VERIFIER	-	-
DWG CHECK	-	-
APPROVED	-	-

CLIENT:	REVIEWED BY:
NPDC	-
CONTRACT No. -	DATE: -
PROJECT No. -	APPROVED BY: -
	DATE: -

Te Kaunihera-ā-Rohe o Ngāmotu
New Plymouth District Council

LOCATION / PROJECT:
 Coastal Taranaki School
 Carthew and Curtis Streets
 Ōkato

DRAWING TITLE:
Concept Plan
Speed Management Improvements
 Page 2 of 4

CO-ORDINATE SYSTEM:	ORIGINAL SCALE (A1)
NZGD 2000	1:100
DATUM:	REDUCED SCALE (A3)
-	1:200

DISCIPLINE:
Civil
NPDC DRAWING No. -
CONSULTANT DRAWING No. -
REV. -

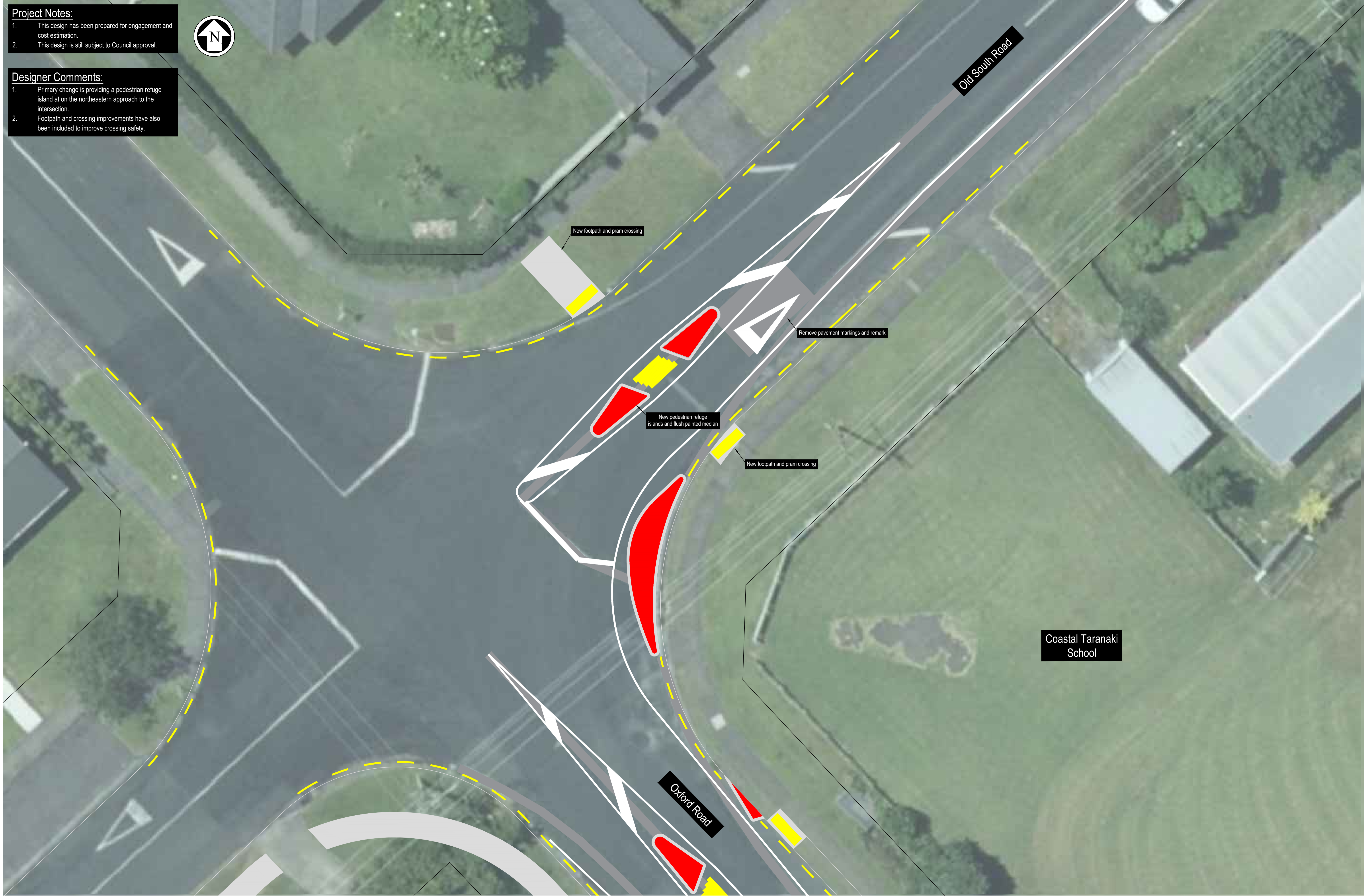
Project Notes:

- This design has been prepared for engagement and cost estimation.
- This design is still subject to Council approval.



Designer Comments:

- Primary change is providing a pedestrian refuge island at on the northeastern approach to the intersection.
- Footpath and crossing improvements have also been included to improve crossing safety.



REV No.	REVISION DESCRIPTION	BY	CHK	APPD	DATE
2	Amended to remove SH works	DJB	-	-	-
3	Addition of refuge island	DJB	-	-	-

CONSULTANT:	BY	DATE
FIELDWORK	-	-
DESIGN	-	-
DRAWN	DJB	Oct23
DSG VERIFIER	-	-
DWG CHECK	-	-
APPROVED	-	-

CLIENT:	REVIEWED BY:
NPDC	-
CONTRACT No. -	DATE: -
PROJECT No. -	APPROVED BY: -
	DATE: -

Te Kaunihera-ā-Rohe o Ngāmotu
New Plymouth District Council

LOCATION / PROJECT:
 Coastal Taranaki School
 Carthew and Curtis Streets
 Ōkato

DRAWING TITLE:
 Concept Plan
 Speed Management Improvements
 Page 3 of 4

CO-ORDINATE SYSTEM:	ORIGINAL SCALE (A1)
NZGD 2000	1:100
DATUM:	REDUCED SCALE (A3)
-	1:200

DISCIPLINE:
Civil
NPDC DRAWING No. -
CONSULTANT DRAWING No. -
REV. -

DO NOT SCALE OFF DRAWING

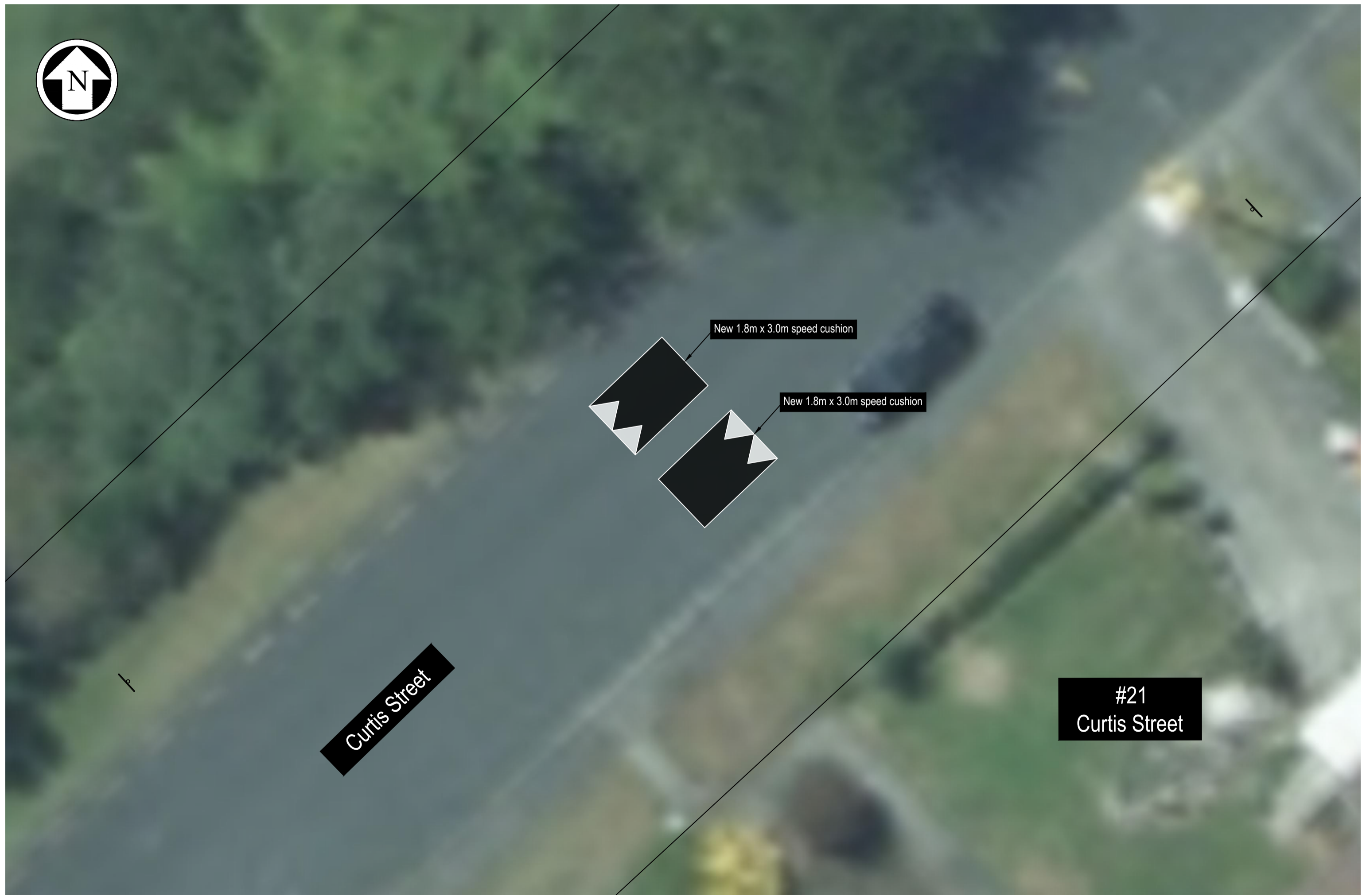
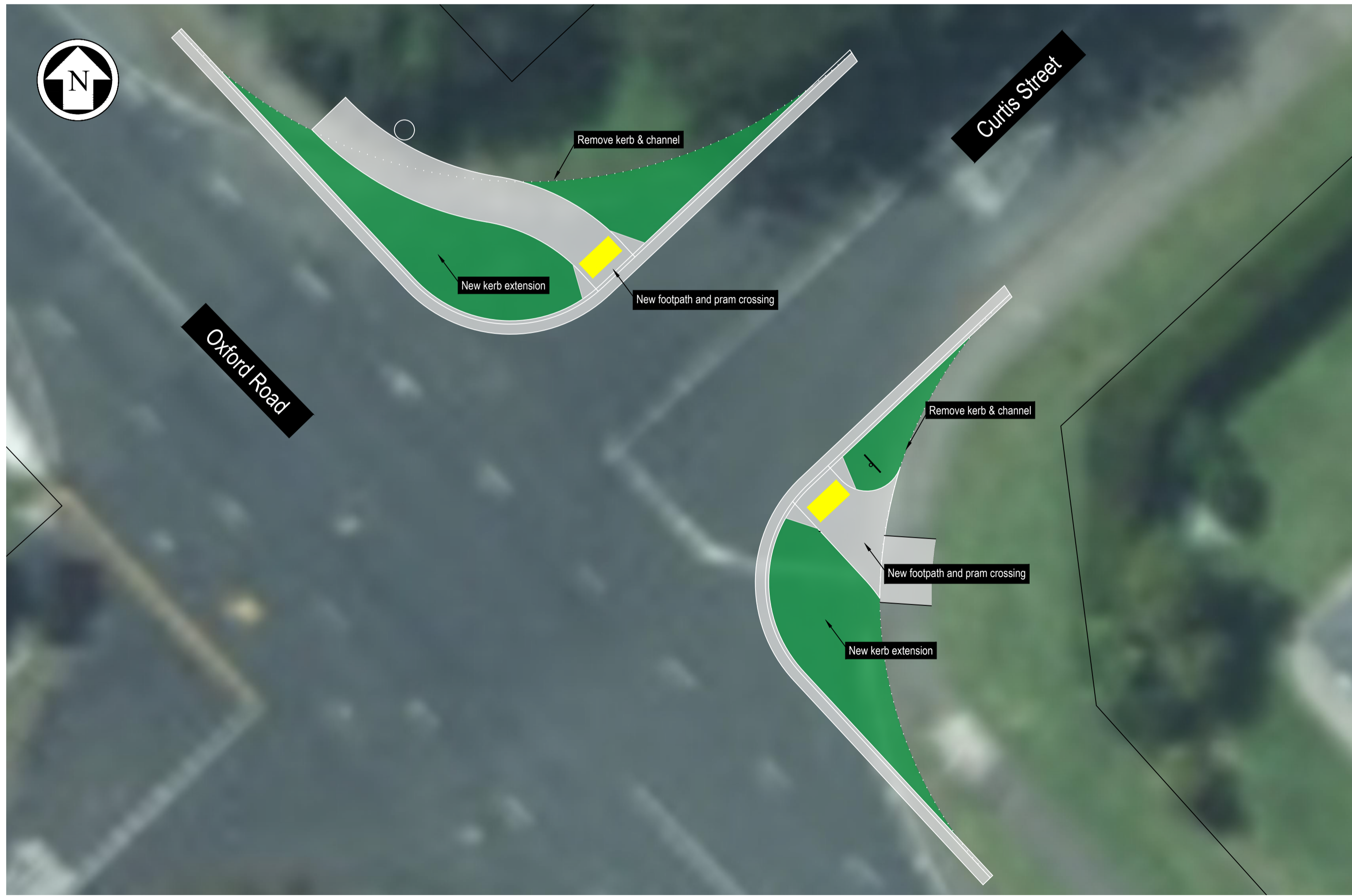
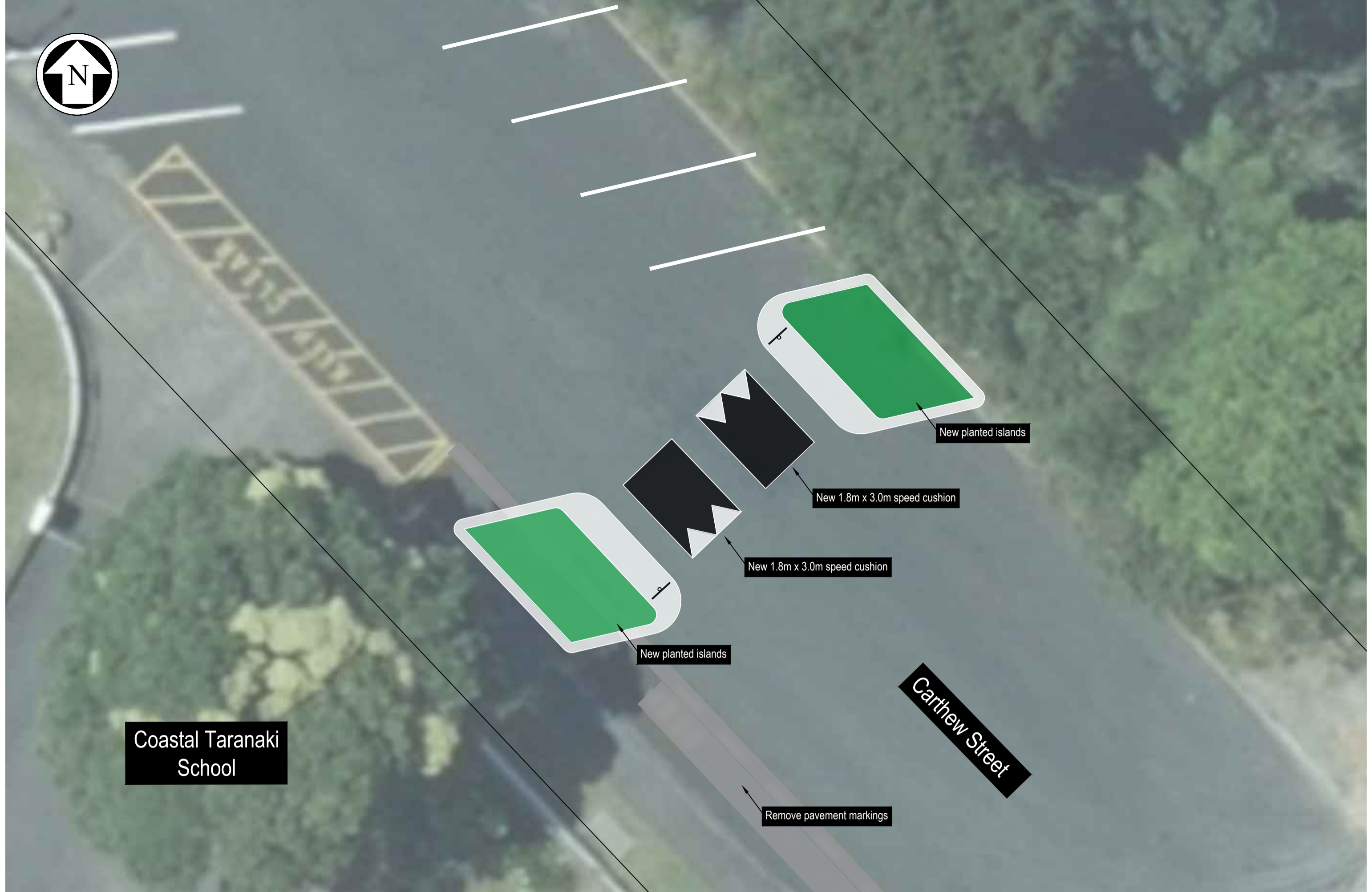
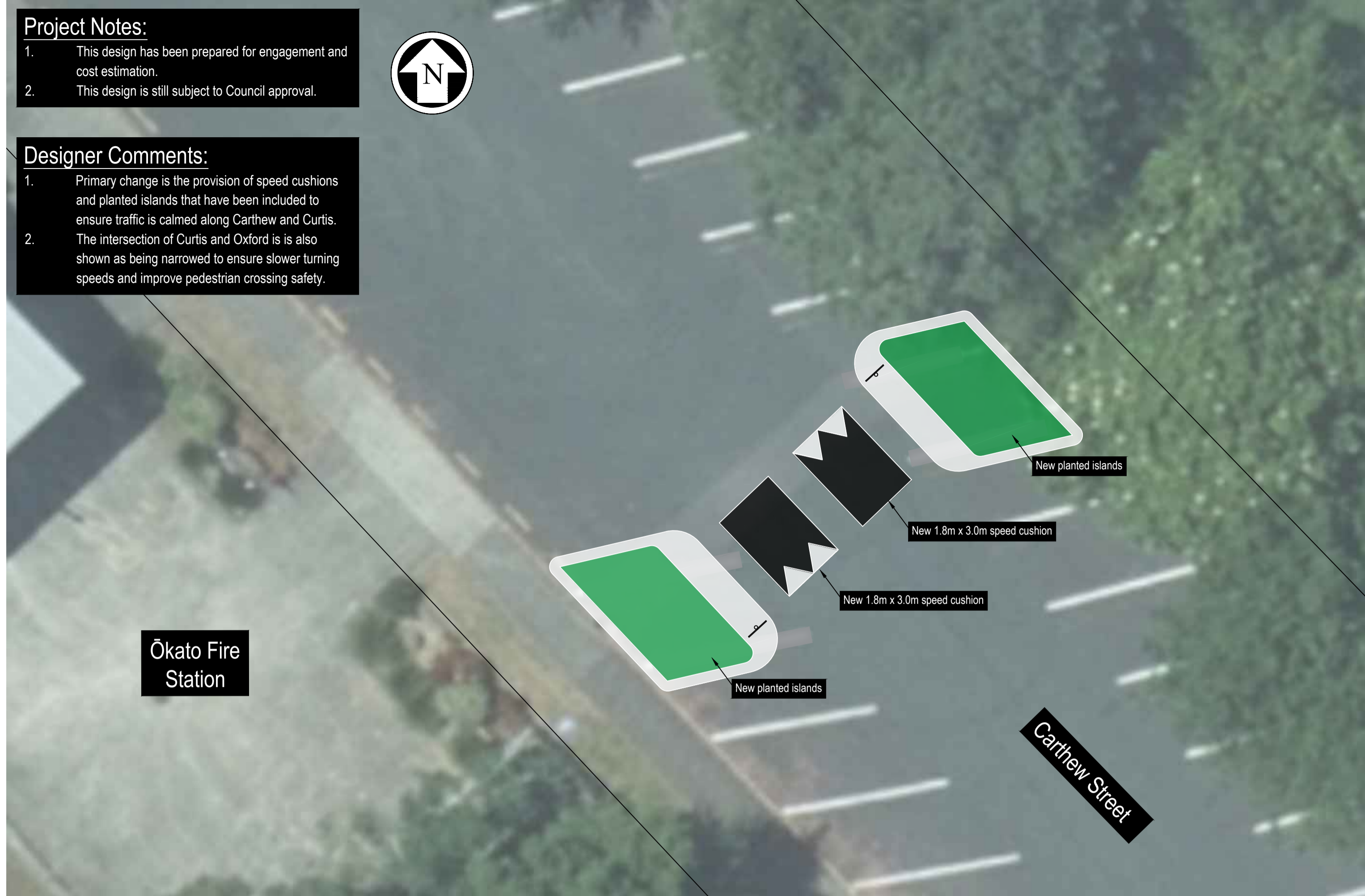
Project Notes:

1. This design has been prepared for engagement and cost estimation.
2. This design is still subject to Council approval.



Designer Comments:

1. Primary change is the provision of speed cushions and planted islands that have been included to ensure traffic is calmed along Carthew and Curtis.
2. The intersection of Curtis and Oxford is also shown as being narrowed to ensure slower turning speeds and improve pedestrian crossing safety.



REV No.	REVISION DESCRIPTION	BY	CHK	APPD	DATE
2	Amended to remove SH works	DJB	-	-	-
3	Addition of refuge island	DJB	-	-	-

CONSULTANT:	BY:	DATE:
	FIELDWORK:	-
	DESIGN:	-
	DRAWN:	DJB Oct23
	DSG VERIFIER:	-
	DWG CHECK:	-
	APPROVED:	-

CLIENT:	REVIEWED BY:
NPDC	-
CONTRACT No.:	DATE:
-	-
PROJECT No.:	APPROVED BY:
-	-
	DATE:
	-



LOCATION / PROJECT:
 Coastal Taranaki School
 Carthew and Curtis Streets
 Ōkato

DRAWING TITLE:
 Concept Plan
 Speed Management Improvements
 Page 4 of 4

CO-ORDINATE SYSTEM:	ORIGINAL SCALE (A1)
NZGD 2000	1:100
DATUM:	REDUCED SCALE (A3)
-	1:200

DISCIPLINE:	Civil
NPDC DRAWING No.:	-
CONSULTANT DRAWING No.:	-
REV.:	-

DO NOT SCALE OFF DRAWING