

Contents

Submission No: 2801	Ben Payne	3825
Submission No: 2802	Shaan Immelman	3825
Submission No: 2803	Ollie Braddock	3825
Submission No: 2804	Caleb Hollows.....	3826
Submission No: 2805	Alexis B	3826
Submission No: 2806	James Hall	3826
Submission No: 2807	Kyle Smith	3827
Submission No: 2808	Milan Bhakta	3827
Submission No: 2809	Tysen Sullivan.....	3827
Submission No: 2810	Jerry Wei	3828
Submission No: 2811	Payce Hetaraka-Wall.....	3828
Submission No: 2812	Deacon Rowson	3828
Submission No: 2813	Jaeden Rasmussen	3829
Submission No: 2814	Xaviar Chase	3829
Submission No: 2815	Liam Harper.....	3829
Submission No: 2816	Cullen Fitzpatrick.....	3830
Submission No: 2817	Dwayne Pyper	3830
Submission No: 2818	Taylor Hopkins	3830
Submission No: 2819	Elliott Holder	3831
Submission No: 2820	Crus French	3831
Submission No: 2821	Conor Eager.....	3831
Submission No: 2822	Dillin Plimmer.....	3832
Submission No: 2823	Brock Ironside	3832
Submission No: 2824	Daniel Peng	3832
Submission No: 2825	Logan Elrick	3833
Submission No: 2826	Lenny Jackson	3833
Submission No: 2827	Josh Ace.....	3833
Submission No: 2828	Brock Drinkwater	3834
Submission No: 2829	Devon Cameron	3834
Submission No: 2830	Shawn Peng.....	3834
Submission No: 2831	Daniel McNeil.....	3835
Submission No: 2832	Bradley	3835
Submission No: 2833	Logan Duff.....	3835
Submission No: 2834	Tanya Smillie-Mattock	3836
Submission No: 2835	Connor Parsons	3836
Submission No: 2836	Charlotte Evans	3836
Submission No: 2837	Franki Blackburn	3837
Submission No: 2838	Shayne Ryan.....	3837

Submission No: 2839	Callie Visser	3837
Submission No: 2840	Chastine Mendoza	3838
Submission No: 2841	Mustafa Jameel	3838
Submission No: 2842	Lola Potter	3838
Submission No: 2843	Tim Beale	3839
Submission No: 2844	Noah Brewer	3839
Submission No: 2845	Zoe Hall	3839
Submission No: 2846	Tyler Cruikshank	3840
Submission No: 2847	Denby Scott	3840
Submission No: 2848	Mac Rawlinson	3840
Submission No: 2849	Jeffrey Su	3841
Submission No: 2850	Max Maclachlan	3841
Submission No: 2851	Noah Andrews	3841
Submission No: 2852	Joel	3842
Submission No: 2853	David Marriott	3842
Submission No: 2854	Thomas Hamerton	3842
Submission No: 2855	Ashton McCall	3843
Submission No: 2856	Cade	3843
Submission No: 2857	Lachie Moles	3843
Submission No: 2858	Brock Mack	3844
Submission No: 2859	Taj Parker	3844
Submission No: 2860	Charlie Herbert	3844
Submission No: 2861	Craig	3845
Submission No: 2862	Geoff Hitchcock	3846
Submission No: 2863	Daniel Martin	3847
Submission No: 2864	Ganga Nanayakkara	3849
Submission No: 2865	Craig Cardie	3850
Submission No: 2866	David Thorp	3852
Submission No: 2867	Maree Judd	3853
Submission No: 2868	Blair Werder	3854
Submission No: 2869	Kelly Loney	3856
Submission No: 2870	Ben Davies	3858
Submission No: 2871	Hanna Andrewes	3859
Submission No: 2872	Glenys Guild	3861
Submission No: 2873	Michael Lay	3863
Submission No: 2874	Renee Manella	3865
Submission No: 2875	K Whelan	3866
Submission No: 2876	John Matthews	3868
Submission No: 2877	Rachel Smith	3875
Submission No: 2878	Kevin Wisnewski	3876

Submission No: 2879	Riki Temata.....	3877
Submission No: 2880	Jamahl Tekira	3879
Submission No: 2881	Diane Hoeta	3881
Submission No: 2882	Jenny Goddard	3882
Submission No: 2883	Bridget Johnston	3884
Submission No: 2884	Karla Gibson	3886
Submission No: 2885	Michele	3887
Submission No: 2886	Stacey Robinson.....	3889
Submission No: 2887	Rhonda Norden.....	3891
Submission No: 2888	Ramesh Satrasala.....	3892
Submission No: 2889	Kathy Hopkins	3893
Submission No: 2890	Tash	3896
Submission No: 2891	Julie	3898
Submission No: 2892	Dion Cowley	3899
Submission No: 2893	Tracy Cowley	3900
Submission No: 2894	Jarrold See.....	3901
Submission No: 2895	Stacey	3902
Submission No: 2896	Josh Smaller	3904
Submission No: 2897	Sarah Hosie	3905
Submission No: 2898	Brian	3906
Submission No: 2899	Amy	3908
Submission No: 2900	Andrew French.....	3909

NPDC's Draft 10 Year Plan

Office Use Only: 177-A

Submission No: 2801

Ben Payne

Wish to speak to the Council: No

Developing a multi-sport hub

Option 2: Develop the hub and begin construction of the building in year 6, contributing \$40 million. NPDC's preferred option.

Comments

Postcard Submission.

That's a lot of money for this.

NPDC's Draft 10 Year Plan

Office Use Only: 179-A

Submission No: 2802

Shaan Immelman

Wish to speak to the Council: No

Developing a multi-sport hub

Option 2: Develop the hub and begin construction of the building in year 6, contributing \$40 million. NPDC's preferred option.

Comments

Postcard submission

NPDC's Draft 10 Year Plan

Office Use Only: 180-A

Submission No: 2803

Ollie Braddock

Wish to speak to the Council: No

Developing a multi-sport hub

Option 2: Develop the hub and begin construction of the building in year 6, contributing \$40 million. NPDC's preferred option.

Comments

Postcard Submission.

Good idea but there are better and more things First.

NPDC's Draft 10 Year Plan

Office Use Only: 181-A

Submission No: 2804

Caleb Hollows

Wish to speak to the Council: No

Developing a multi-sport hub

Option 1: Do not develop a multi-sport hub.

Comments

Postcard submission

Should be used to maintain current facilities instead of just building whole new facilities.

NPDC's Draft 10 Year Plan

Office Use Only: 183-A

Submission No: 2805

Alexis B

Wish to speak to the Council: No

Developing a multi-sport hub

Option 1: Do not develop a multi-sport hub.

Comments

Postcard submission

Giving submissions to a school is likely to give false data. Students do not pay contributions and are more likely to vote for your desired options. Time during lesson 'Huia Ropn' given collect better data.

NPDC's Draft 10 Year Plan

Office Use Only: 184-A

Submission No: 2806

James Hall

Wish to speak to the Council: No

Developing a multi-sport hub

Option 2: Develop the hub and begin construction of the building in year 6, contributing \$40 million. NPDC's preferred option.

Comments

Postcard Submission.

I think more should be spent on improving our water infrastructure before money is spent on stuff like this.

NPDC's Draft 10 Year Plan

Office Use Only: 185-A

Submission No: 2807

Kyle Smith

Wish to speak to the Council: No

Developing a multi-sport hub

Option 2: Develop the hub and begin construction of the building in year 6, contributing \$40 million. NPDC's preferred option.

Comments

Postcard submission

NPDC's Draft 10 Year Plan

Office Use Only: 186-A

Submission No: 2808

Milan Bhakta

Wish to speak to the Council: No

Developing a multi-sport hub

Option 2: Develop the hub and begin construction of the building in year 6, contributing \$40 million. NPDC's preferred option.

Comments

Postcard Submission.

I personally believe there are more serious issues to deal with in Taranaki and New Plymouth.

NPDC's Draft 10 Year Plan

Office Use Only: 187-A

Submission No: 2809

Tysen Sullivan

Wish to speak to the Council: No

Developing a multi-sport hub

Option 2: Develop the hub and begin construction of the building in year 6, contributing \$40 million. NPDC's preferred option.

Comments

Postcard submission

NPDC's Draft 10 Year Plan

Office Use Only: 188-A

Submission No: 2810

Jerry Wei

Wish to speak to the Council: Yes

Developing a multi-sport hub

Option 1: Do not develop a multi-sport hub.

Comments

Postcard submission

I believe it should be built by a private company, not the Council.

NPDC's Draft 10 Year Plan

Office Use Only: 189-A

Submission No: 2811

Payce Hetaraka-Wall

Wish to speak to the Council: No

Developing a multi-sport hub

Option 2: Develop the hub and begin construction of the building in year 6, contributing \$40 million. NPDC's preferred option.

Comments

Postcard Submission.

Dame for MVP.

NPDC's Draft 10 Year Plan

Office Use Only: 190-A

Submission No: 2812

Deacon Rowson

Wish to speak to the Council: No

Developing a multi-sport hub

Option 2: Develop the hub and begin construction of the building in year 6, contributing \$40 million. NPDC's preferred option.

Comments

Postcard submission

NPDC's Draft 10 Year Plan

Office Use Only: 191-A

Submission No: 2813

Jaeden Rasmussen

Wish to speak to the Council: No

Developing a multi-sport hub

Option 2: Develop the hub and begin construction of the building in year 6, contributing \$40 million. NPDC's preferred option.

Comments

Postcard Submission.

It isn't of top priority but it would be cool.

NPDC's Draft 10 Year Plan

Office Use Only: 192-A

Submission No: 2814

Xaviar Chase

Wish to speak to the Council: No

Developing a multi-sport hub

Option 2: Develop the hub and begin construction of the building in year 6, contributing \$40 million. NPDC's preferred option.

Comments

Postcard submission

NPDC's Draft 10 Year Plan

Office Use Only: 193-A

Submission No: 2815

Liam Harper

Wish to speak to the Council: No

Developing a multi-sport hub

Option 2: Develop the hub and begin construction of the building in year 6, contributing \$40 million. NPDC's preferred option.

Comments

Postcard submission

NPDC's Draft 10 Year Plan

Office Use Only: 194-A

Submission No: 2816

Cullen Fitzpatrick

Wish to speak to the Council: No

Developing a multi-sport hub

Option 1: Do not develop a multi-sport hub.

Comments

Postcard submission

Other pressing issues that need to be sorted out first.

NPDC's Draft 10 Year Plan

Office Use Only: 195-A

Submission No: 2817

Dwayne Pyper

Wish to speak to the Council: Yes

Developing a multi-sport hub

Option 3: Develop the hub and begin construction of the building faster, with work starting in year 4 and contributing \$40 million.

Comments

Postcard submission

Balls never out pizza the hut

NPDC's Draft 10 Year Plan

Office Use Only: 196-A

Submission No: 2818

Taylor Hopkins

Wish to speak to the Council: No

Developing a multi-sport hub

Option 2: Develop the hub and begin construction of the building in year 6, contributing \$40 million. NPDC's preferred option.

Comments

Postcard submission

NPDC's Draft 10 Year Plan

Office Use Only: 197-A

Submission No: 2819

Elliott Holder

Wish to speak to the Council: No

Developing a multi-sport hub

Option 1: Do not develop a multi-sport hub.

Comments

Postcard submission

Build some houses, not a sports hub!

NPDC's Draft 10 Year Plan

Office Use Only: 198-A

Submission No: 2820

Crus French

Wish to speak to the Council: No

Developing a multi-sport hub

Option 2: Develop the hub and begin construction of the building in year 6, contributing \$40 million. NPDC's preferred option.

Comments

Postcard submission

NPDC's Draft 10 Year Plan

Office Use Only: 199-A

Submission No: 2821

Conor Eager

Wish to speak to the Council: No

Developing a multi-sport hub

Option 1: Do not develop a multi-sport hub.

Comments

Postcard submission Let's get going on the bigger issues first - eg. climate change - if we invest the \$40 million towards real change, a lot could be done.

NPDC's Draft 10 Year Plan

Office Use Only: 200-A

Submission No: 2822

Dillin Plimmer

Wish to speak to the Council: Yes

Developing a multi-sport hub

Option 3: Develop the hub and begin construction of the building faster, with work starting in year 4 and contributing \$40 million.

Comments

Postal submission

Make a golf hitting net.

NPDC's Draft 10 Year Plan

Office Use Only: 201-A

Submission No: 2823

Brock Ironside

Wish to speak to the Council: No

Developing a multi-sport hub

Option 2: Develop the hub and begin construction of the building in year 6, contributing \$40 million. NPDC's preferred option.

Comments

Postcard submission

NPDC's Draft 10 Year Plan

Office Use Only: 202-A

Submission No: 2824

Daniel Peng

Wish to speak to the Council: Yes

Developing a multi-sport hub

Option 3: Develop the hub and begin construction of the building faster, with work starting in year 4 and contributing \$40 million.

Comments

Postal Submission

This is just a suggestion maybe you could start building it in 3 years so teenagers that have to go to university have a chance to go.

NPDC's Draft 10 Year Plan

Office Use Only: 203-A

Submission No: 2825

Logan Elrick

Wish to speak to the Council: No

Developing a multi-sport hub

Option 2: Develop the hub and begin construction of the building in year 6, contributing \$40 million. NPDC's preferred option.

Comments

Postcard submission

NPDC's Draft 10 Year Plan

Office Use Only: 204-A

Submission No: 2826

Lenny Jackson

Wish to speak to the Council: No

Developing a multi-sport hub

Option 1: Do not develop a multi-sport hub.

Comments

Postcard submission

Prime real estate should be utilised for other purposes possibly something economically beneficial!

NPDC's Draft 10 Year Plan

Office Use Only: 205-A

Submission No: 2827

Josh Ace

Wish to speak to the Council: No

Developing a multi-sport hub

Option 2: Develop the hub and begin construction of the building in year 6, contributing \$40 million. NPDC's preferred option.

Comments

Postcard Submission.

Will help economy long term but at the moment there are more important things to worry about.

NPDC's Draft 10 Year Plan

Office Use Only: 206-A

Submission No: 2828

Brock Drinkwater

Wish to speak to the Council: No

Developing a multi-sport hub

Option 2: Develop the hub and begin construction of the building in year 6, contributing \$40 million. NPDC's preferred option.

Comments

Postcard submission

NPDC's Draft 10 Year Plan

Office Use Only: 207-A

Submission No: 2829

Devon Cameron

Wish to speak to the Council: No

Developing a multi-sport hub

Option 1: Do not develop a multi-sport hub.

Comments

Postcard submission

Already have all this stuff.

NPDC's Draft 10 Year Plan

Office Use Only: 208-A

Submission No: 2830

Shawn Peng

Wish to speak to the Council: Yes

Developing a multi-sport hub

Option 3: Develop the hub and begin construction of the building faster, with work starting in year 4 and contributing \$40 million.

Comments

Postal Submission

I would like to hear how developing the hub earlier would affect the budget and overall to year plan.

NPDC's Draft 10 Year Plan

Office Use Only: 209-A

Submission No: 2831

Daniel McNeil

Wish to speak to the Council: No

Developing a multi-sport hub

Option 2: Develop the hub and begin construction of the building in year 6, contributing \$40 million. NPDC's preferred option.

Comments

Postcard Submission.

Please include a field used for ultimate frisbee.

NPDC's Draft 10 Year Plan

Office Use Only: 210-A

Submission No: 2832

Bradley

Wish to speak to the Council: No

Developing a multi-sport hub

Option 1: Do not develop a multi-sport hub.

Comments

Postcard submission

Sounds like something tax payers will end up "contributing" to.

NPDC's Draft 10 Year Plan

Office Use Only: 211-A

Submission No: 2833

Logan Duff

Wish to speak to the Council: No

Developing a multi-sport hub

Option 2: Develop the hub and begin construction of the building in year 6, contributing \$40 million. NPDC's preferred option.

Comments

Postcard submission

NPDC's Draft 10 Year Plan

Office Use Only: 212-A

Submission No: 2834

Tanya Smillie-Mattock

Wish to speak to the Council: Yes

Developing a multi-sport hub

Option 3: Develop the hub and begin construction of the building faster, with work starting in year 4 and contributing \$40 million.

Comments

Postal Submission

You are smart!

NPDC's Draft 10 Year Plan

Office Use Only: 213-A

Submission No: 2835

Connor Parsons

Wish to speak to the Council: No

Developing a multi-sport hub

Option 2: Develop the hub and begin construction of the building in year 6, contributing \$40 million. NPDC's preferred option.

Comments

Postcard submission

NPDC's Draft 10 Year Plan

Office Use Only: 214-A

Submission No: 2836

Charlotte Evans

Wish to speak to the Council: No

Developing a multi-sport hub

Option 2: Develop the hub and begin construction of the building in year 6, contributing \$40 million. NPDC's preferred option.

Comments

Postcard submission

NPDC's Draft 10 Year Plan

Office Use Only: 215-A

Submission No: 2837

Franki Blackburn

Wish to speak to the Council: No

Developing a multi-sport hub

Option 2: Develop the hub and begin construction of the building in year 6, contributing \$40 million. NPDC's preferred option.

Comments

Postcard submission

NPDC's Draft 10 Year Plan

Office Use Only: 217-A

Submission No: 2838

Shayne Ryan

Wish to speak to the Council: No

Developing a multi-sport hub

Option 2: Develop the hub and begin construction of the building in year 6, contributing \$40 million. NPDC's preferred option.

Comments

Postcard Submission.

I think it is good except I think we should make a spot for the horses as so many people do go to the races.

NPDC's Draft 10 Year Plan

Office Use Only: 218-A

Submission No: 2839

Callie Visser

Wish to speak to the Council: No

Developing a multi-sport hub

Option 2: Develop the hub and begin construction of the building in year 6, contributing \$40 million. NPDC's preferred option.

Comments

Postcard submission

NPDC's Draft 10 Year Plan

Office Use Only: 219-A

Submission No: 2840

Chastine Mendoza

Wish to speak to the Council: No

Developing a multi-sport hub

Option 2: Develop the hub and begin construction of the building in year 6, contributing \$40 million. NPDC's preferred option.

Comments

Postcard submission

NPDC's Draft 10 Year Plan

Office Use Only: 220-A

Submission No: 2841

Mustafa Jameel

Wish to speak to the Council: No

Developing a multi-sport hub

Option 2: Develop the hub and begin construction of the building in year 6, contributing \$40 million. NPDC's preferred option.

Comments

Postcard Submission.

I think the Multi Sports ground should be build but it shouldn't be rushed.

NPDC's Draft 10 Year Plan

Office Use Only: 221-A

Submission No: 2842

Lola Potter

Wish to speak to the Council: No

Developing a multi-sport hub

Option 1: Do not develop a multi-sport hub.

Comments

Postcard submission

Too much money on an unnecessary project - New Plymouth isn't that big so its hardly an impracticality.

NPDC's Draft 10 Year Plan

Office Use Only: 222-A

Submission No: 2843

Tim Beale

Wish to speak to the Council: No

Developing a multi-sport hub

Option 2: Develop the hub and begin construction of the building in year 6, contributing \$40 million. NPDC's preferred option.

Comments

Postcard submission

NPDC's Draft 10 Year Plan

Office Use Only: 223-A

Submission No: 2844

Noah Brewer

Wish to speak to the Council: No

Developing a multi-sport hub

Option 2: Develop the hub and begin construction of the building in year 6, contributing \$40 million. NPDC's preferred option.

Comments

Postcard submission

NPDC's Draft 10 Year Plan

Office Use Only: 224-A

Submission No: 2845

Zoe Hall

Wish to speak to the Council: No

Developing a multi-sport hub

Option 1: Do not develop a multi-sport hub.

Comments

Postcard submission

Build an indoor training athletics facility with track.

NPDC's Draft 10 Year Plan

Office Use Only: 225-A

Submission No: 2846

Tyler Cruikshank

Wish to speak to the Council: No

Developing a multi-sport hub

Option 2: Develop the hub and begin construction of the building in year 6, contributing \$40 million. NPDC's preferred option.

Comments

Postcard submission

NPDC's Draft 10 Year Plan

Office Use Only: 226-A

Submission No: 2847

Denby Scott

Wish to speak to the Council: No

Developing a multi-sport hub

Option 1: Do not develop a multi-sport hub.

Comments

Postcard submission

A stadium would be a better focus as it will have the ability to bring in money to improve NP.

NPDC's Draft 10 Year Plan

Office Use Only: 227-A

Submission No: 2848

Mac Rawlinson

Wish to speak to the Council: No

Developing a multi-sport hub

Option 2: Develop the hub and begin construction of the building in year 6, contributing \$40 million. NPDC's preferred option.

Comments

Postcard submission

NPDC's Draft 10 Year Plan

Office Use Only: 228-A

Submission No: 2849

Jeffrey Su

Wish to speak to the Council: No

Developing a multi-sport hub

Option 2: Develop the hub and begin construction of the building in year 6, contributing \$40 million. NPDC's preferred option.

Comments

Postcard submission

NPDC's Draft 10 Year Plan

Office Use Only: 229-A

Submission No: 2850

Max Maclachlan

Wish to speak to the Council: No

Developing a multi-sport hub

Option 1: Do not develop a multi-sport hub.

Comments

Postcard submission

Pointless waste of money.

NPDC's Draft 10 Year Plan

Office Use Only: 230-A

Submission No: 2851

Noah Andrews

Wish to speak to the Council: No

Developing a multi-sport hub

Option 2: Develop the hub and begin construction of the building in year 6, contributing \$40 million. NPDC's preferred option.

Comments

Postcard submission

NPDC's Draft 10 Year Plan

Office Use Only: 231-A

Submission No: 2852 **Joel**

Wish to speak to the Council: No

Developing a multi-sport hub

Option 1: Do not develop a multi-sport hub.

Comments

Postcard submission

This is a complete waste of time and money and could go to much better causes. Give food to the hungry.

NPDC's Draft 10 Year Plan

Office Use Only: 232-A

Submission No: 2853 **David Marriott**

Wish to speak to the Council: No

Developing a multi-sport hub

Option 2: Develop the hub and begin construction of the building in year 6, contributing \$40 million. NPDC's preferred option.

Comments

Postcard submission

NPDC's Draft 10 Year Plan

Office Use Only: 233-A

Submission No: 2854 **Thomas Hamerton**

Wish to speak to the Council: No

Developing a multi-sport hub

Option 1: Do not develop a multi-sport hub.

Comments

Postcard submission

I am not paying tax for this much rather giving money to starving africans for food and water this could buy 266666666 water bottles.

NPDC's Draft 10 Year Plan

Office Use Only: 234-A

Submission No: 2855

Ashton McCall

Wish to speak to the Council: No

Developing a multi-sport hub

Option 2: Develop the hub and begin construction of the building in year 6, contributing \$40 million. NPDC's preferred option.

Comments

Postcard submission

NPDC's Draft 10 Year Plan

Office Use Only: 235-A

Submission No: 2856

Cade

Wish to speak to the Council: No

Developing a multi-sport hub

Option 1: Do not develop a multi-sport hub.

Comments

Postcard submission

Too much money

NPDC's Draft 10 Year Plan

Office Use Only: 236-A

Submission No: 2857

Lachie Moles

Wish to speak to the Council: No

Developing a multi-sport hub

Option 2: Develop the hub and begin construction of the building in year 6, contributing \$40 million. NPDC's preferred option.

Comments

Postcard submission

NPDC's Draft 10 Year Plan

Office Use Only: 237-A

Submission No: 2858

Brock Mack

Wish to speak to the Council: No

Developing a multi-sport hub

Option 1: Do not develop a multi-sport hub.

Comments

Postcard submission

Its pointless.

Draft 10 Year Plan

Office Use Only: 238-A

Submission No: 2859

Taj Parker

Wish to speak to the Council: No

Developing a multi-sport hub

Option 2: Develop the hub and begin construction of the building in year 6, contributing \$40 million. NPDC's preferred option.

Comments

Postcard submission

NPDC's Draft 10 Year Plan

Office Use Only: 239-A

Submission No: 2860

Charlie Herbert

Wish to speak to the Council: No

Developing a multi-sport hub

Option 1: Do not develop a multi-sport hub.

Comments

Postcard submission

Rates go up by 12 percent.

NPDC's Draft 10 Year Plan

Office Use Only: 6947

Submission No: 2861

Craig

Wish to speak to the Council: No

Fixing our plumbing

How much should we invest in our plumbing over the next 10 years?

Option 2: Low. Start chipping away at the backlog so that it grows more slowly. \$78 million additional funding.

How do we pay for fixing our plumbing?

Option C: Fully debt fund long life assets.

Saving water and water meters

Option 4: High. A significant water saving plan, including water meters. This will cost \$56 million over 10 years while reducing new water supply assets, saving \$120 million over the long term.

Improving stormwater management in Waitara

Option 2: Invest \$9 million over 10 years.

Extending our tracks and trails network

Option 1: Do nothing. Status quo. No new or additional investment in tracks and trails.

Boosting our Climate Action Framework

Option 1: Do nothing. Status quo. Continue working on the CAF but no new actions or additional funding.

Developing a multi-sport hub

Option 1: Do not develop a multi-sport hub.

NPDC's Draft 10 Year Plan

Office Use Only: 6948

Submission No: 2862

Geoff Hitchcock

Wish to speak to the Council: No

Fixing our plumbing

How much should we invest in our plumbing over the next 10 years?

Option 3. Medium. Clear out the backlog and start making some improvements. \$140 million additional funding. NPDC's preferred option.

How do we pay for fixing our plumbing?

Option C: Fully debt fund long life assets.

Saving water and water meters

Option 1: Do nothing. Status quo costing \$42 million over 10 years for new water supply assets. No water meters.

Improving stormwater management in Waitara

Option 3: Invest \$20 million over 10 years. NPDC's preferred option.

Extending our tracks and trails network

Option 3: Option 2, plus give our tracks and trails network a boost over the next 10 years at a total cost of \$60 million.

Boosting our Climate Action Framework

Option 3: As per option 2, plus make the additional funding of \$150,000 per year permanent.

Developing a multi-sport hub

Option 3: Develop the hub and begin construction of the building faster, with work starting in year 4 and contributing \$40 million.

Comments

There has been an under investment in sporting facilities for a long time. this needs to happen as soon as possible

NPDC's Draft 10 Year Plan

Office Use Only: 6950

Submission No: 2863

Daniel Martin

Wish to speak to the Council: No

Fixing our plumbing

How much should we invest in our plumbing over the next 10 years?

Option 1. Do nothing. Status quo. No additional funding.

How do we pay for fixing our plumbing?

Option A: Pay for it from rates

Comments

Allow home water tanks to catch rain water from rooves. If the rain water was used for non human consumption it would need no treatment. Easily installed and the savings would be substancial. All our water is court this way, and we have no health issues with our water. Treatment consists of a cup of white vingar in the tank every six months or so

Saving water and water meters

Comments

Read my previous comment

Improving stormwater management in Waitara

Comments

Build two large open water canels draining from the lower areas that flood with tidal gates. No new builds in the valley floor and a gradual removal of older unused buildings.

Extending our tracks and trails network

Comments

Tracks and trails are a want, and not an essential service. Get your prioities right.

Boosting our Climate Action Framework

Comments

Climate Change is a natural occuring happening. Stop throwing good money after bad.

Developing a multi-sport hub

Comments

Another want. Not essential service. Again stop throwing good money after bad.

What else?

Do not use bore water. The resulting replacement of copper water cylinders would be a huge expense, paid for by whom?

NPDC's Draft 10 Year Plan

Office Use Only: 6951

Submission No: 2864

Ganga Nanayakkara

Wish to speak to the Council: No

Fixing our plumbing

How much should we invest in our plumbing over the next 10 years?

Option 3: Medium. Clear out the backlog and start making some improvements. \$140 million additional funding. NPDC's preferred option.

How do we pay for fixing our plumbing?

Option C: Fully debt fund long life assets.

Saving water and water meters

Option 3: Medium. A middle of the range water saving plan, including water meters. This will cost \$50 million over 10 years while reducing new water supply assets, saving \$121 million over the long term. NPDC's preferred option.

Improving stormwater management in Waitara

Option 2: Invest \$9 million over 10 years.

Extending our tracks and trails network

Option 1: Do nothing. Status quo. No new or additional investment in tracks and trails.

Boosting our Climate Action Framework

Option 2: Continue working on the CAF, implement Planting our Place costing \$200,000 per year and electrifying our NPDC vehicle fleet costing \$1 million over 10 years. Begin additional funding of \$150,000 per year for three years. NPDC's preferred option.

Developing a multi-sport hub

Option 1: Do not develop a multi-sport hub.

NPDC's Draft 10 Year Plan

Office Use Only: 6956

Submission No: 2865

Craig Cardie

Wish to speak to the Council: No

Fixing our plumbing

How much should we invest in our plumbing over the next 10 years?

Option 3. Medium. Clear out the backlog and start making some improvements. \$140 million additional funding. NPDC's preferred option.

How do we pay for fixing our plumbing?

Option C: Fully debt fund long life assets.

Comments

Whom is in charge of this dept ? have they not been doing their job as you state "and we've been underinvesting in it for many years. It's a backlog that we need to get on top of to avoid more frequent water outages and sewerage overflows." Surly this has either been covered up or pushed aside from the person in charge of maintaining this or better still why was there no plan of action or accountability from a certain dept to stop this kind of miss appropriation of asset maintenance ??????

Saving water and water meters

Option 3: Medium. A middle of the range water saving plan, including water meters. This will cost \$50 million over 10 years while reducing new water supply assets, saving \$121 million over the long term. NPDC's preferred option.

Comments

So long as the council does not double dip on the rates portion for water along with a water usage invoice separate to this. And ensure ALL water meters costs of supply and installation is covered by the NPDC

Improving stormwater management in Waitara

Option 3: Invest \$20 million over 10 years. NPDC's preferred option.

Comments

Fix the problem

Extending our tracks and trails network

Option 2: Extend the Coastal Walkway from Bell Block to Waitara and develop further the Taranaki Traverse Mountain to Sea, costing \$36 million. NPDC's preferred option.

Comments

We have a great place here so lets make the most of it !

Boosting our Climate Action Framework

Option 1: Do nothing. Status quo. Continue working on the CAF but no new actions or additional funding.

Comments

As you do not have an option 4 (Continue working on the CAF, implement Planting our Place costing \$200,000 per year and NOT electrifying our NPDC vehicle fleet costing \$1 million) i'd have to have option 4. But i have to tick a box...The cost savings of vehicle electrification are way dearer then running convention fuel efficient vehicles. And the global harm done by manufacture of these electric vehicles is no different to Combustion.

Developing a multi-sport hub

Comments

A hub sounds good, but why not stop immediate spending on any sports facility until this part of the survey is closed and feedback submitted, a few million \$\$ could be saved and redistributed right now in between submission and planning ????????

What else?

I think I have said my main concerns

NPDC's Draft 10 Year Plan

Office Use Only: 6957

Submission No: 2866

David Thorp

Wish to speak to the Council: No

Fixing our plumbing

How much should we invest in our plumbing over the next 10 years?

How do we pay for fixing our plumbing?

Saving water and water meters

Option 3: Medium. A middle of the range water saving plan, including water meters. This will cost \$50 million over 10 years while reducing new water supply assets, saving \$121 million over the long term. NPDC's preferred option.

Improving stormwater management in Waitara

Extending our tracks and trails network

Option 2: Extend the Coastal Walkway from Bell Block to Waitara and develop further the Taranaki Traverse Mountain to Sea, costing \$36 million. NPDC's preferred option.

Boosting our Climate Action Framework

Option 2: Continue working on the CAF, implement Planting our Place costing \$200,000 per year and electrifying our NPDC vehicle fleet costing \$1 million over 10 years. Begin additional funding of \$150,000 per year for three years. NPDC's preferred option.

Developing a multi-sport hub

Option 2: Develop the hub and begin construction of the building in year 6, contributing \$40 million. NPDC's preferred option.

Comments

We certainly need an all purpose sports hub that will serve the community for 50 years but the present Raceway is not the best location. The area is far too small and no consideration has been given to the vast amount of parking required for the proposed facilities. The huge flat area at the old airport site at BBK which is presently being used as a dairy farm would be perfect....close enough to the CBD, would not affect residents and would allow for plenty of parking and future development.

NPDC's Draft 10 Year Plan

Office Use Only: 6970

Submission No: 2867

Maree Judd

Wish to speak to the Council: No

Fixing our plumbing

How much should we invest in our plumbing over the next 10 years?

How do we pay for fixing our plumbing?

Saving water and water meters

Option 2: Low. Introduce a water saving plan, including water meters. This will cost \$45 million over 10 years while reducing new water supply assets, saving \$62 million over the long term.

Improving stormwater management in Waitara

Extending our tracks and trails network

Option 2: Extend the Coastal Walkway from Bell Block to Waitara and develop further the Taranaki Traverse Mountain to Sea, costing \$36 million. NPDC's preferred option.

Boosting our Climate Action Framework

Option 2: Continue working on the CAF, implement Planting our Place costing \$200,000 per year and electrifying our NPDC vehicle fleet costing \$1 million over 10 years. Begin additional funding of \$150,000 per year for three years. NPDC's preferred option.

Developing a multi-sport hub

Option 3: Develop the hub and begin construction of the building faster, with work starting in year 4 and contributing \$40 million.

Comments

A lot of different sports are struggling with a lack of facilities which is having an impact on the number of people being able to play sport and partake in active recreation. The number of people being turned away from sports clubs has a long-term impact on the health and wellbeing of our community. The earlier this facility is built the better!

NPDC's Draft 10 Year Plan

Office Use Only: 6973

Submission No: 2868

Blair Werder

Organisation: Werder Electrical

Wish to speak to the Council: No

Fixing our plumbing

How much should we invest in our plumbing over the next 10 years?

Option 3. Medium. Clear out the backlog and start making some improvements. \$140 million additional funding. NPDC's preferred option.

How do we pay for fixing our plumbing?

Option B: Partially debt fund long life assets to bridge the gap. NPDC's preferred option.

Saving water and water meters

Option 2: Low. Introduce a water saving plan, including water meters. This will cost \$45 million over 10 years while reducing new water supply assets, saving \$62 million over the long term.

Comments

there could be more informative to the public about how to save water.

Improving stormwater management in Waitara

Option 2: Invest \$9 million over 10 years.

Extending our tracks and trails network

Option 2: Extend the Coastal Walkway from Bell Block to Waitara and develop further the Taranaki Traverse Mountain to Sea, costing \$36 million. NPDC's preferred option.

Boosting our Climate Action Framework

Option 2: Continue working on the CAF, implement Planting our Place costing \$200,000 per year and electrifying our NPDC vehicle fleet costing \$1 million over 10 years. Begin additional funding of \$150,000 per year for three years. NPDC's preferred option.

Comments

i think if the council is looking at spending that amount on vehicles, the fleet needs to be parked on site with no personal use after hours.

Developing a multi-sport hub

Option 3: Develop the hub and begin construction of the building faster, with work starting in year 4 and contributing \$40 million.

Comments

Taranaki needs this now. Not year 6.

NPDC's Draft 10 Year Plan

Office Use Only: 6975

Submission No: 2869

Kelly Loney

Wish to speak to the Council: No

Fixing our plumbing

How much should we invest in our plumbing over the next 10 years?

Option 3. Medium. Clear out the backlog and start making some improvements. \$140 million additional funding. NPDC's preferred option.

How do we pay for fixing our plumbing?

Option B: Partially debt fund long life assets to bridge the gap. NPDC's preferred option.

Comments

Why haven't we been chipping away at it these past years?

Saving water and water meters

Option 3: Medium. A middle of the range water saving plan, including water meters. This will cost \$50 million over 10 years while reducing new water supply assets, saving \$121 million over the long term. NPDC's preferred option.

Improving stormwater management in Waitara

Option 3: Invest \$20 million over 10 years. NPDC's preferred option.

Extending our tracks and trails network

Option 2: Extend the Coastal Walkway from Bell Block to Waitara and develop further the Taranaki Traverse Mountain to Sea, costing \$36 million. NPDC's preferred option.

Boosting our Climate Action Framework

Option 2: Continue working on the CAF, implement Planting our Place costing \$200,000 per year and electrifying our NPDC vehicle fleet costing \$1 million over 10 years. Begin additional funding of \$150,000 per year for three years. NPDC's preferred option.

Developing a multi-sport hub

Option 2: Develop the hub and begin construction of the building in year 6, contributing \$40 million. NPDC's preferred option.

What else?

The Council is proposing to reduce the Govett-Brewster Art Gallery's funding by \$400,000, continuing the cut made in response to COVID-19. While I understand this cost can be absorbed by the Gallery, these following points will help.

I strongly oppose any reduction to Gallery opening hours. The financial argument doesn't stack up (as we lose revenue across tickets, cinema, and shop) and there's a big negative impact on our visitors affected by the uncertainty of when it's open.

I strongly advocate extending free entry to the Gallery for school kids and concession entry prices for tertiary students. At present discounted/concession entry prices are only available to senior citizens who present a Super Gold card, reducing entry from \$15.00 to \$10.00, and free entry is available to those aged under 16. Extending free entry for all school students, and extending concession pricing to tertiary students (on presentation of valid student ID) will get more young people into the gallery and help build positive supporters. It's not a big cost, but will help build future Friends and advocates for the gallery. Plus we think we need to invest in the younger – not just the older – generation.

I strongly advocate for extending free entry to the Gallery for all Taranaki residents. Currently only New Plymouth residents are eligible for free entry, a disincentive for visitors from across Taranaki. Opening free entry to residents of South Taranaki and Stratford districts would support a Team Taranaki approach and increase visitation from regional residents. The cost isn't significant and sponsor support or a contribution from those districts could help offset this, plus there's benefit in the Gallery again becoming a Taranaki – not just a New Plymouth – asset.

I also ask that the councillors listen to the staff of the Gallery. In recent years, probably the last three terms, the expert advice of the Gallery employees has been ignored and staff have been left feeling undervalued and like the Gallery is being set up to fail. The Gallery is a jewel in Taranaki's crown and it's about time it's treated that way.

NPDC's Draft 10 Year Plan

Office Use Only: 6978

Submission No: 2870

Ben Davies

Wish to speak to the Council: No

Fixing our plumbing

How much should we invest in our plumbing over the next 10 years?

Option 3. Medium. Clear out the backlog and start making some improvements. \$140 million additional funding. NPDC's preferred option.

How do we pay for fixing our plumbing?

Option B: Partially debt fund long life assets to bridge the gap. NPDC's preferred option.

Saving water and water meters

Option 3: Medium. A middle of the range water saving plan, including water meters. This will cost \$50 million over 10 years while reducing new water supply assets, saving \$121 million over the long term. NPDC's preferred option.

Improving stormwater management in Waitara

Option 1: Do nothing. No additional investment in Waitara stormwater.

Extending our tracks and trails network

Option 3: Option 2, plus give our tracks and trails network a boost over the next 10 years at a total cost of \$60 million.

Boosting our Climate Action Framework

Option 3: As per option 2, plus make the additional funding of \$150,000 per year permanent.

Developing a multi-sport hub

Option 1: Do not develop a multi-sport hub.

Comments

Fund and support the current local facilities. New Plymouth has great facilities outside the central area. As part of supporting communities, invest in these rather than another structure - that requires a commute for most people, parking, reduction in the use of local facilities etc

NPDC's Draft 10 Year Plan

Office Use Only: 6982

Submission No: 2871

Hanna Andrewes

Wish to speak to the Council: No

Fixing our plumbing

How much should we invest in our plumbing over the next 10 years?

Option 3. Medium. Clear out the backlog and start making some improvements. \$140 million additional funding. NPDC's preferred option.

How do we pay for fixing our plumbing?

Option B: Partially debt fund long life assets to bridge the gap. NPDC's preferred option.

Comments

As a resident of Inglewood we are constantly dealing with crappy water situations where it goes brown and we're unable to use it. This is unacceptable & priority needs to be made here

Saving water and water meters

Option 1: Do nothing. Status quo costing \$42 million over 10 years for new water supply assets. No water meters.

Comments

I don't believe water meters is the answer to water saving. More education needs to go into teaching people about why we need to save water rather than just putting added financial pressure on households who are already under significant stress due to rising costs. We need to upgrade our water systems so that we can hold a larger amount rather than it just running off into the sea.

Improving stormwater management in Waitara

Option 2: Invest \$9 million over 10 years.

Extending our tracks and trails network

Option 3: Option 2, plus give our tracks and trails network a boost over the next 10 years at a total cost of \$60 million.

Comments

As a resident of Inglewood we would love to see some upgrading and developing of tracks. We currently have one walkway "The Windsor walkway" that is essentially a country road & is mostly unsafe for kids, disabled and the elderly. We have two smaller tracks that are only 5 min long, hardly worth leaving the house for. It would be great to have some longer walkways with bush that are enjoyable to walk on.

Boosting our Climate Action Framework

Option 2: Continue working on the CAF, implement Planting our Place costing \$200,000 per year and electrifying our NPDC vehicle fleet costing \$1 million over 10 years. Begin additional funding of \$150,000 per year for three years. NPDC's preferred option.

Developing a multi-sport hub

Option 1: Do not develop a multi-sport hub.

What else?

Greater focus needs to be placed on the town of Inglewood. At the moment we are the forgotten town in this region with funding often overlooked, we have new families and subdivisions moving in all the time & these residents want a reason to stay in Inglewood rather than drive to neighbouring towns to shop/do recreational activities.

We have a town that is split in two & is unsafe for children to walk. The intersection of mountain road/the bypass is an absolute mess & is so unsafe for people to cross. And why on earth is there a huge fence down the rail line, it's hardly a selling point for potential businesses to move into the empty shops on moa street if people can't access them easily, it would be great to see moa street developed in a way with potential green spaces/plantings/seats etc so that people actually wanted to sit near the train station and a gate/over pass type thing over the railway in the middle would be great to make accessibility easier and more inviting to the businesses over on moa street. It would be great to see more focus placed on fruit tree plantings on green spaces or even a community garden. Why do we have so much unused grass spaces? Completely pointless

I completely disagree with the proposed fee increase of the Inglewood pools. This pool is highly used in the holidays usually multiple times in a week by some and increasing the fees would mean that some families may have to stop going or decrease the amount of times they go. This is so unfair!

NPDC's Draft 10 Year Plan

Office Use Only: 6986

Submission No: 2872

Glenys Guild

Wish to speak to the Council: No

Fixing our plumbing

How much should we invest in our plumbing over the next 10 years?

Option 3. Medium. Clear out the backlog and start making some improvements. \$140 million additional funding. NPDC's preferred option.

How do we pay for fixing our plumbing?

Option C: Fully debt fund long life assets.

Saving water and water meters

Option 2: Low. Introduce a water saving plan, including water meters. This will cost \$45 million over 10 years while reducing new water supply assets, saving \$62 million over the long term.

Comments

In a region with such a high rainfall, why are residents being targeted for using that water? Why do we have to save it when we do not have enough reservoirs to contain it? Previous councils have been remiss in not dealing with water supply issues as they arose. The present council sees installing water meters simply as an excuse to extract more money from long suffering residents to pay for earlier failures. Forget fancy walkways/cycleways etc, and put that money towards the water problem until it is solved

Improving stormwater management in Waitara

Option 3: Invest \$20 million over 10 years. NPDC's preferred option.

Comments

Just do it

Extending our tracks and trails network

Option 1: Do nothing. Status quo. No new or additional investment in tracks and trails.

Comments

Put the money towards the water problem instead of the feel good projects, they can wait until essential services which benefit the whole community have been solved.

Boosting our Climate Action Framework

Option 2: Continue working on the CAF, implement Planting our Place costing \$200,000 per year and electrifying our NPDC vehicle fleet costing \$1 million over 10 years. Begin additional funding of \$150,000 per year for three years. NPDC's preferred option.

Developing a multi-sport hub

Option 1: Do not develop a multi-sport hub.

Comments

Investigate options other than a multi-sport hub. There is no need to have everything in one place which will doubtless cause other problems. How many undeveloped areas are there in and around New Plymouth eg. the former Barret St hospital grounds.

What else?

In a low wage economy like that in New Zealand, many residents and ratepayers do not have an increasing supply of money with which to meet the constant demands of society and in particular, their local councils. Please think of your suppliers of the council money, when considering your 'wish list', and basically stick to what is absolutely necessary first.

NPDC's Draft 10 Year Plan

Office Use Only: 6987

Submission No: 2873

Michael Lay

Wish to speak to the Council: No

Fixing our plumbing

How much should we invest in our plumbing over the next 10 years?

Option 3. Medium. Clear out the backlog and start making some improvements. \$140 million additional funding. NPDC's preferred option.

How do we pay for fixing our plumbing?

Option C: Fully debt fund long life assets.

Saving water and water meters

Option 1: Do nothing. Status quo costing \$42 million over 10 years for new water supply assets. No water meters.

Comments

No water meters - sell some assets and stop loading more on the ratepayer

Improving stormwater management in Waitara

Option 3: Invest \$20 million over 10 years. NPDC's preferred option.

Extending our tracks and trails network

Option 1: Do nothing. Status quo. No new or additional investment in tracks and trails.

Comments

There is not the money to do this - it's a want and not a need

Boosting our Climate Action Framework

Option 1: Do nothing. Status quo. Continue working on the CAF but no new actions or additional funding.

Developing a multi-sport hub

Option 1: Do not develop a multi-sport hub.

Comments

Look to build a sports hub in another location; there's too many problems doing it at the race course so an out of town location should be considered

What else?

I am not in any way a homophobe but for God's sake can the NPDC stop trying to make NZ the LGBT capital of New Zealand and wasting money on rainbow Zebra Crossings etc. It's all getting too much having this shoved down our throat everywhere we go.

NPDC's Draft 10 Year Plan

Office Use Only: 6988

Submission No: 2874

Renee Manella

Wish to speak to the Council: No

Fixing our plumbing

How much should we invest in our plumbing over the next 10 years?

Option 4: High. Clear out the backlog and make significant improvements. \$229 million additional funding.

How do we pay for fixing our plumbing?

Option B: Partially debt fund long life assets to bridge the gap. NPDC's preferred option.

Saving water and water meters

Option 1: Do nothing. Status quo costing \$42 million over 10 years for new water supply assets. No water meters.

Comments

Homeowner water collection could be encouraged (subsidised). Water meters are not fair on lower-income families.

Improving stormwater management in Waitara

Option 3: Invest \$20 million over 10 years. NPDC's preferred option.

Extending our tracks and trails network

Option 3: Option 2, plus give our tracks and trails network a boost over the next 10 years at a total cost of \$60 million.

Boosting our Climate Action Framework

Option 3: As per option 2, plus make the additional funding of \$150,000 per year permanent.

Comments

Consider food planting/community gardens where possible.

Developing a multi-sport hub

Option 1: Do not develop a multi-sport hub.

What else?

We desperately need safe cycleways, particularly within a 1.5km radius of schools.

NPDC's Draft 10 Year Plan

Office Use Only: 6989

Submission No: 2875

K Whelan

Wish to speak to the Council: No

Fixing our plumbing

How much should we invest in our plumbing over the next 10 years?

Option 3. Medium. Clear out the backlog and start making some improvements. \$140 million additional funding. NPDC's preferred option.

How do we pay for fixing our plumbing?

Option B: Partially debt fund long life assets to bridge the gap. NPDC's preferred option.

Saving water and water meters

Option 1: Do nothing. Status quo costing \$42 million over 10 years for new water supply assets. No water meters.

Comments

Spend money to increase water supply. Encourage people to save roof and or grey water at their properties for gardens et, eg by finding a water tank supplier with reduced costs, maybe subsidized. Water meters will only make people cross

Improving stormwater management in Waitara

Extending our tracks and trails network

Boosting our Climate Action Framework

Option 1: Do nothing. Status quo. Continue working on the CAF but no new actions or additional funding.

Developing a multi-sport hub

Comments

Having a Multi-sports hub is an excellent idea for the city. Not sure that the proposed location is the most ideal though. While using the center of the racecourse for sports playing surfaces/fields would be a good use of this space, am really not wild on there being a building in the space also. A building would really detract from the aesthetic esp when coming into NP.

What else?

Have heard that the entry costs to the Aquatic Centre and community pools are to be raised. The pools are extremely popular and essential assets for the populace. Making it even more expensive than it is would make it less affordable for all. Those struggling financially will find it even more difficult to go. So, please don't.

NPDC's Draft 10 Year Plan

Office Use Only: 6993

Submission No: 2876

John Matthews

Organisation: Technix Industries Limited

Wish to speak to the Council: Yes

Fixing our plumbing

How much should we invest in our plumbing over the next 10 years?

Option 3. Medium. Clear out the backlog and start making some improvements. \$140 million additional funding. NPDC's preferred option.

How do we pay for fixing our plumbing?

Option B: Partially debt fund long life assets to bridge the gap. NPDC's preferred option.

Comments

Yes - Instal water meters for all users. Recover installation costs and a portion of capital costs in the water rate. Recover operating costs in the water rate.

Saving water and water meters

Option 3: Medium. A middle of the range water saving plan, including water meters. This will cost \$50 million over 10 years while reducing new water supply assets, saving \$121 million over the long term. NPDC's preferred option.

Comments

Yes - adopt user pay philosophy. Water is not free - a user-pays charge will make most users thoughtful about minimising water usage.

Improving stormwater management in Waitara

Option 3: Invest \$20 million over 10 years. NPDC's preferred option.

Comments

Yes - adequately design for climate change impact

Extending our tracks and trails network

Option 3: Option 2, plus give our tracks and trails network a boost over the next 10 years at a total cost of \$60 million.

Comments

Yes - ensure that our tracks are adequate for the purpose - some are too narrow for persons to easily pass each other. Ensure that the Maunga Taranaki to moana track is not overwhelmed by walkers as is the Tongariro Crossing - a disgusting trail of human ants with a lack of privacy and minimal rubbish prevention.

Boosting our Climate Action Framework

Option 2: Continue working on the CAF, implement Planting our Place costing \$200,000 per year and electrifying our NPDC vehicle fleet costing \$1 million over 10 years. Begin additional funding of \$150,000 per year for three years. NPDC's preferred option.

Comments

Be prepared to commit much larger contributions - the impact of climate change will be significantly greater than that of Covid-19. Reverse the present Government's shutdown of offshore oil and gas exploration and development - a stupid move. As an example on account of a shortage of natural gas which is a low carbon energy source, we have consumed more coal (a very high carbon contributor) last year since circa 2002. Fonterra is unable to make the conversion from coal to natural gas in a rapid manner on account of a shortage. A transition to a low carbon, or no carbon, environment is fundamental but must be on a managed transition basis.

Developing a multi-sport hub

Option 3: Develop the hub and begin construction of the building faster, with work starting in year 4 and contributing \$40 million.

Comments

Yes - get on with it. A major contribution to the wellbeing of New Plymouth citizens and visitors alike.

What else?

Your ideas lack completion - we have the Govett Brewster Art Gallery-Len Lye Art Centre-White Hart Building streetscape development ignored.

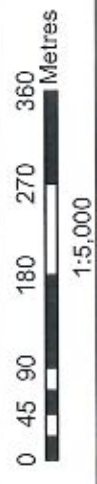
We have a weed-filled, unattractive northern entrance to our city - the excuse that it is Waka Kotahi NZTA's responsibility results in nothing happening over the last fifteen years.

Similarly, Airport Road and the airport itself lacks attractive landscaping and a "Welcome" and "Nice of you to Visit" message - it's a job 50% done. We have highly skilled landscape and horticulture persons within the Council's activities. The Council lacks imaginative vision. We should put our visual bucks where the biggest visual bang is.

See next page for submission regarding proposed Omata Village – State Highway 45 Bypass.

WAIREKA PROPERTIES LTD

**OMATA VILLAGE –
SH45 BYPASS**



NPDC Web Viewer



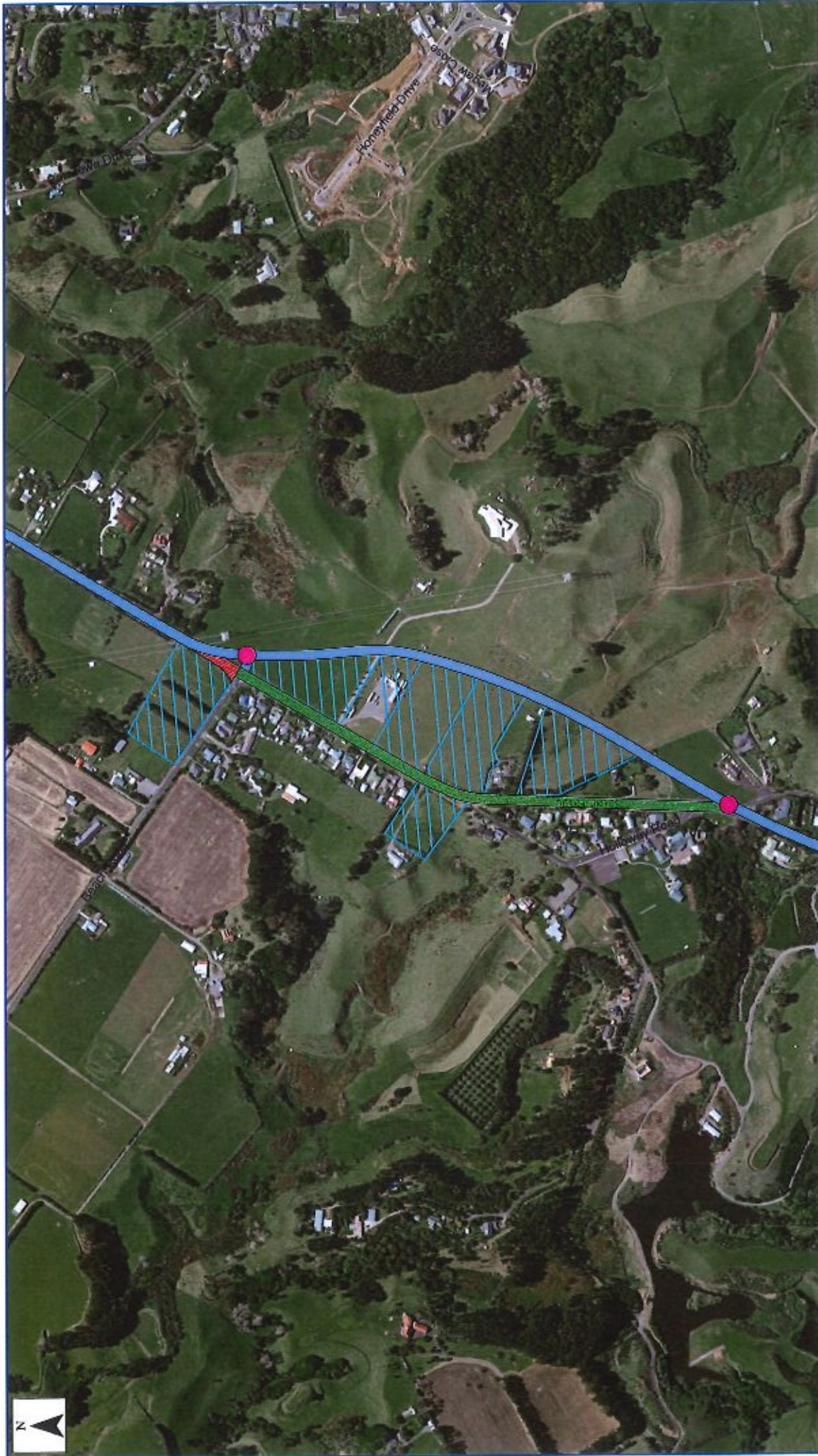
NEW PLYMOUTH
DISTRICT COUNCIL
newplymouthnz.com



Date: 15 May, 2018

COPYRIGHT: Cadastral information sourced from Land Information New Zealand data. Crown Copyright Reserved.
DISCLAIMER: NPDC assumes no responsibility for the completeness or accuracy of the data displayed on the plot. To be used for indicative purposes only.

Map Author: NPDC



PROPOSED HIGHWAY REALIGNMENT
PROPOSED ROAD CLOSURE
CURRENT SH45 WITH PLANTED BERMS

POSSIBLE SUBDIVISIONAL LAND - INDICATIVE ONLY (INCLUDING CAPE?)

NEW INTERSECTION COMPLIANT WITH NEW ZEALAND TRANSPORT AGENCY DESIGN CRITERIA

NOTE: VILLAGE VEHICLE SPEED LIMIT 50 KM/HOUR (INCLUDING BEACH ROAD)

SUBMISSION FROM JOHN & LYNDA MATTHEWS OMATA VILLAGE - STATE HIGHWAY 45 BYPASS IN LONG TERM DISTRICT PLAN (FOR DISCUSSION PURPOSES)

SCALE
 1:5000 © A3
DRAWING NUMBER
 A03-TL-CV-CP-001
REV
 3

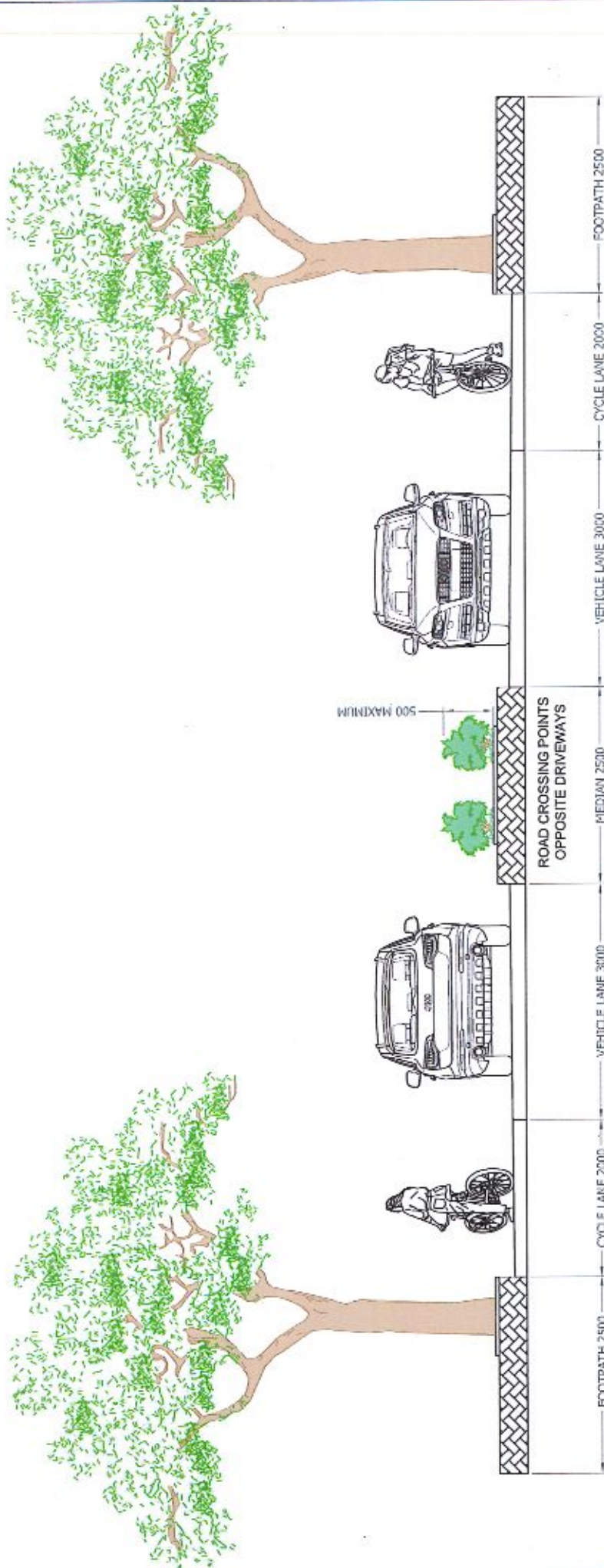
© TECHNIX INDUSTRIES LTD.
 The drawing is the property of Technix Industries Ltd. and shall not be used for any other purpose without the written authority of Technix Industries Ltd.

NO.	DATE	REVISION
D	15-05-18	REALIGNMENT UPDATED
C	15-05-18	PROPOSED HIGHWAY UPDATED
B	15-05-18	NEW INTERSECTION SYMBOL ADDED
A	09-05-18	DRAWING TITLE UPDATED

SIGNED	DATE	APP	DRN	C-K	CHK	DRN	ENG	MW
-	-	-	-	-	-	-	-	-
-	23-05-17	-	-	-	-	-	-	-

TECHNIX
 TEL NO.: +64 6 7598700
 FAX NO.: +64 6 7598701
 Email: technix@technix.net
 PRIVATE BAG 2222
 691 DEVON ROAD
 NEW PLYMOUTH 4342
 NEW ZEALAND

0 45 90 180 270 360 Metres
1:5,000



**OMATA VILLAGE
VEHICLE TRAFFIC DENSITY REDUCTION, SPEED REDUCTION AND VISUAL ENHANCEMENT - OPTION 1
LAYOUT WITHIN THE EXISTING STATE HIGHWAY 45 BOUNDARIES**

NOTE - INTRUDES C. 2 METRES INTO WESTERN PROPERTIES BETWEEN BEACH ROAD AND WAIREKA ROAD EAST AND 1 METRE EACH SIDE BETWEEN WAIREKA ROAD EAST AND HOLLOWAY ROAD, AS CURRENT SH45 LEGAL BOUNDARIES ARE WITHIN FRONTS OF PRIVATE PROPERTIES. TREES PLANTED IN LOCATIONS THAT AVOID PRIVATE DRIVEWAYS.

SUBMISSION FROM JOHN & LYNDA MATTHEWS FOR NPDC LONG TERM DISTRICT PLAN - FOR DISCUSSION PURPOSES.



TEL NO.: +64 6 7598700
 FAX NO.: +64 6 7598701
 Email Add.: technix@technix.net

PRIVATE BAG 2222
 681 DEVON ROAD
 NEW PLYMOUTH 4342
 NEW ZEALAND

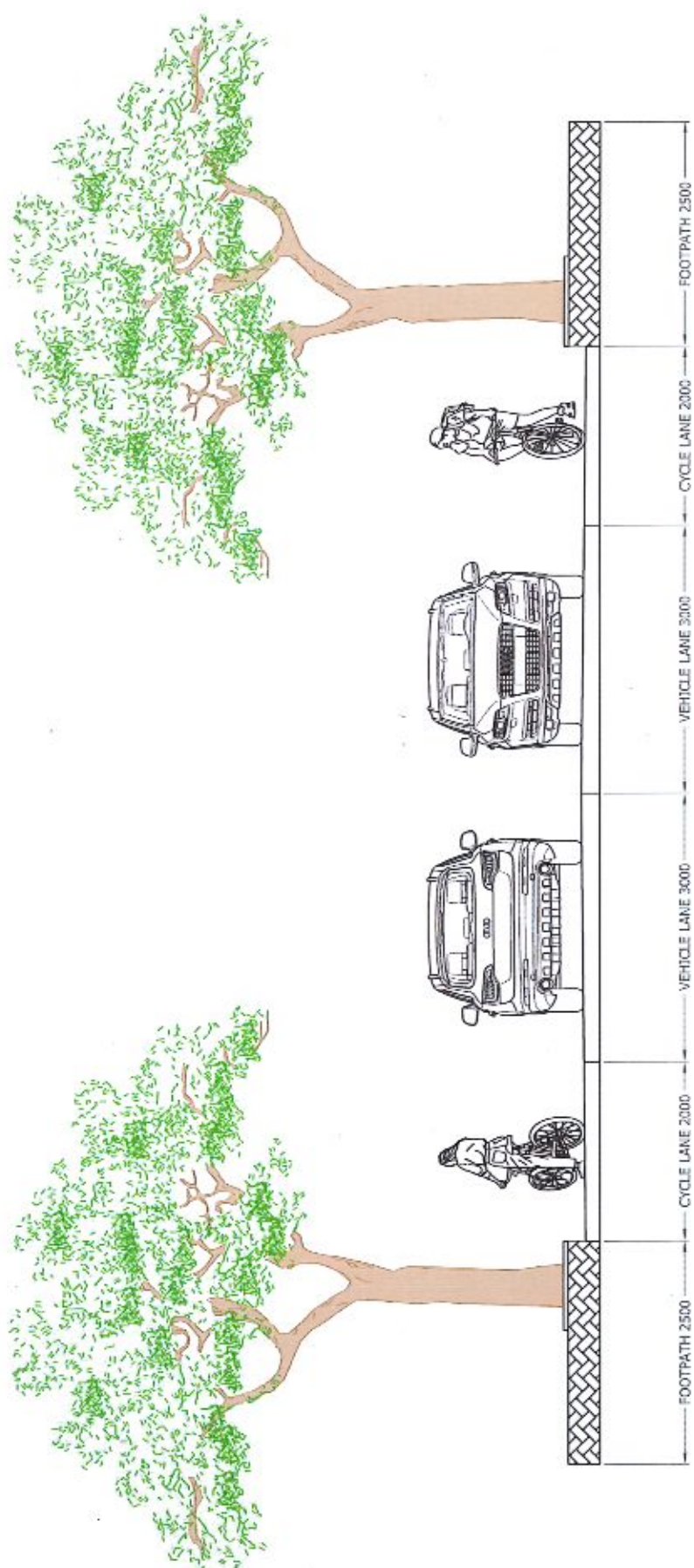
No.	DATE	REVISION
G	21-05-18	DRAWING TITLE UPDATED
F	18-05-18	DETAILS UPDATED
E	18-05-18	BERM TREES ADDED
D	18-05-18	TREES REMOVED

REV	DATE	SIGNED	DATE
MW	-	ENG	-
MW	-	DRN	14-06-17
MW	-	CHK	-
DRN	APP	APP	-

**OMATA VILLAGE - STATE HIGHWAY 45 REALIGNMENT
 TYPICAL CROSS SECTION WITH PLANTED MEDIAN
 AND BERMS FOR MAJORITY OF ROAD LENGTH
 AND BERM CROSSING POINTS OPPOSITE DRIVEWAYS**

© TECHNIX INDUSTRIES LTD.
 This drawing is the property of Technix Industries Ltd. and shall not be
 reproduced or transmitted in any form or by any means, electronic or
 mechanical, including photocopying, recording, or by any information storage
 or retrieval system, without the prior written authority of Technix Industries Ltd.

SCALE 1:50 @ A3
 DRAWING NUMBER A00-TL-OV-QP-003
 REV G



OMATA VILLAGE
VEHICLE TRAFFIC DENSITY REDUCTION, SPEED REDUCTION AND VISUAL ENHANCEMENT - OPTION 2
LAYOUT WITHIN THE EXISTING STATE HIGHWAY 45 DIMENSIONS
 NOTE - TREES PLANTED IN LOCATIONS THAT AVOID PRIVATE DRIVEWAYS.

SUBMISSION FROM JOHN & LYNDA MATTHEWS FOR NPDC LONG TERM DISTRICT PLAN - FOR DISCUSSION PURPOSES.

TECHNIX
 PRIVATE BAG 2222
 691 DEVON ROAD
 NEW PLYMOUTH 4342
 TEL NO.: +64 6 7598700
 FAX NO.: +64 6 7598701
 Email Add.: technix@technix.net

No.	DATE	REVISION	DRN	APP	CHK	APP	DRN	APP	CHK	APP	DATE	SIGNED
G	21-05-18	DRAWING TITLE UPDATED	MW	-	-	-	-	-	-	-	-	-
F	19-05-18	DETAILS UPDATED	MW	-	-	-	-	-	-	-	-	-
E	18-05-18	BERM TREES ADDED	MW	-	-	-	-	-	-	-	14-06-17	MW
D	18-05-18	TREES REMOVED	MW	-	-	-	-	-	-	-	-	-

OMATA VILLAGE - STATE HIGHWAY 45 REALIGNMENT
TYPICAL CROSS SECTION WITH PLANTED BERMS
 FOR MAJORITY OF THE ROAD LENGTH

SCALE	DRAWING NUMBER	REV
1:50 @ A3	A00-TLL-OV-CP-002	G

© TECHNIX INDUSTRIES LTD.
 This drawing is the property of Technix Industries Ltd. and shall not be
 reproduced or transmitted in any form or by any means
 without prior written authority of Technix Industries Ltd.

NPDC's Draft 10 Year Plan

Office Use Only: 6994

Submission No: 2877

Rachel Smith

Wish to speak to the Council: No

Fixing our plumbing

How much should we invest in our plumbing over the next 10 years?

Option 3. Medium. Clear out the backlog and start making some improvements. \$140 million additional funding. NPDC's preferred option.

How do we pay for fixing our plumbing?

Option B: Partially debt fund long life assets to bridge the gap. NPDC's preferred option.

Saving water and water meters

Option 1: Do nothing. Status quo costing \$42 million over 10 years for new water supply assets. No water meters.

Improving stormwater management in Waitara

Option 3: Invest \$20 million over 10 years. NPDC's preferred option.

Extending our tracks and trails network

Option 2: Extend the Coastal Walkway from Bell Block to Waitara and develop further the Taranaki Traverse Mountain to Sea, costing \$36 million. NPDC's preferred option.

Comments

Extend the coastal walkway from Bell Block to Waitara, but DON'T develop the Taranaki Traverse mountain to sea any further

Boosting our Climate Action Framework

Option 1: Do nothing. Status quo. Continue working on the CAF but no new actions or additional funding.

Comments

Agree with planting more trees but it shouldn't cost that much!!!!

Developing a multi-sport hub

Option 1: Do not develop a multi-sport hub.

NPDC's Draft 10 Year Plan

Office Use Only: 6996

Submission No: 2878

Kevin Wisnewski

Wish to speak to the Council: No

Fixing our plumbing

How much should we invest in our plumbing over the next 10 years?

Option 3: Medium. Clear out the backlog and start making some improvements. \$140 million additional funding. NPDC's preferred option.

How do we pay for fixing our plumbing?

Option B: Partially debt fund long life assets to bridge the gap. NPDC's preferred option.

Saving water and water meters

Improving stormwater management in Waitara

Option 3: Invest \$20 million over 10 years. NPDC's preferred option.

Extending our tracks and trails network

Option 2: Extend the Coastal Walkway from Bell Block to Waitara and develop further the Taranaki Traverse Mountain to Sea, costing \$36 million. NPDC's preferred option.

Boosting our Climate Action Framework

Option 1: Do nothing. Status quo. Continue working on the CAF but no new actions or additional funding.

Comments

What climate action?

Developing a multi-sport hub

Option 1: Do not develop a multi-sport hub.

Comments

Can't afford it with run down infrastructure

NPDC's Draft 10 Year Plan

Office Use Only: 6997

Submission No: 2879

Riki Temata

Wish to speak to the Council: No

Fixing our plumbing

How much should we invest in our plumbing over the next 10 years?

Option 3. Medium. Clear out the backlog and start making some improvements. \$140 million additional funding. NPDC's preferred option.

How do we pay for fixing our plumbing?

Option B: Partially debt fund long life assets to bridge the gap. NPDC's preferred option.

Saving water and water meters

Option 2: Low. Introduce a water saving plan, including water meters. This will cost \$45 million over 10 years while reducing new water supply assets, saving \$62 million over the long term.

Improving stormwater management in Waitara

Option 2: Invest \$9 million over 10 years.

Extending our tracks and trails network

Comments

Do not extend the Coastal Walkway to Waitara but develop the Traverse Mountain to Sea.

Boosting our Climate Action Framework

Comments

Implement Planting our Place but do not electrify the NPDC fleet. One of contractors did this with their fleet it was not efficient and created huge waste of time with staff trying to plan journeys around recharging.

Developing a multi-sport hub

Option 3: Develop the hub and begin construction of the building faster, with work starting in year 4 and contributing \$40 million.

Comments

Our region needs more sports facilities and they need to be in a hub for efficiency of use and to attract tournaments (like Palmerston North). My son has missed out on playing BB as they simply do not have enough courts available to accommodate all the teams. Our aging population also need more indoor recreation space.

What else?

The city also needs an Arts and Culture strategy with a funded organization that can facilitate collaborations, take advantage of funding opportunities and ensure we have capacity in this sector. The consents and building inspectors do a great job but ideally they need more staff to ensure a faster turnaround, but not if it is going to increase the cost of consents.

NPDC's Draft 10 Year Plan

Office Use Only: 7000

Submission No: 2880

Jamahl Tekira

Wish to speak to the Council: No

Fixing our plumbing

How much should we invest in our plumbing over the next 10 years?

Option 3. Medium. Clear out the backlog and start making some improvements. \$140 million additional funding. NPDC's preferred option.

How do we pay for fixing our plumbing?

Option B: Partially debt fund long life assets to bridge the gap. NPDC's preferred option.

Saving water and water meters

Option 1: Do nothing. Status quo costing \$42 million over 10 years for new water supply assets. No water meters.

Improving stormwater management in Waitara

Option 3: Invest \$20 million over 10 years. NPDC's preferred option.

Comments

Our house on Mouatt street along with others on the street and surrounding areas, flood quite badly with heavy rain, curb and channeling would be ideal.

Extending our tracks and trails network

Option 2: Extend the Coastal Walkway from Bell Block to Waitara and develop further the Taranaki Traverse Mountain to Sea, costing \$36 million. NPDC's preferred option.

Comments

Option 2 is such a good thing for the community, with an option for people to use this coastal walkway to get to and from work e.g biking etc, however I don't see the need to spend the additional money on the traverse mountain to see.

Boosting our Climate Action Framework

Option 3: As per option 2, plus make the additional funding of \$150,000 per year permanent.

Developing a multi-sport hub

Option 3: Develop the hub and begin construction of the building faster, with work starting in year 4 and contributing \$40 million.

Comments

This will hopefully be the best thing for sporting in Taranaki looking and moving forward for the future.

NPDC's Draft 10 Year Plan

Office Use Only: 7001

Submission No: 2881

Diane Hoeta

Wish to speak to the Council: No

Fixing our plumbing

How much should we invest in our plumbing over the next 10 years?

Option 2. Low. Start chipping away at the backlog so that it grows more slowly. \$78 million additional funding.

How do we pay for fixing our plumbing?

Option B: Partially debt fund long life assets to bridge the gap. NPDC's preferred option.

Saving water and water meters

Option 1: Do nothing. Status quo costing \$42 million over 10 years for new water supply assets. No water meters.

Improving stormwater management in Waitara

Option 2: Invest \$9 million over 10 years.

Extending our tracks and trails network

Option 2: Extend the Coastal Walkway from Bell Block to Waitara and develop further the Taranaki Traverse Mountain to Sea, costing \$36 million. NPDC's preferred option.

Boosting our Climate Action Framework

Option 1: Do nothing. Status quo. Continue working on the CAF but no new actions or additional funding.

Developing a multi-sport hub

Option 3: Develop the hub and begin construction of the building faster, with work starting in year 4 and contributing \$40 million.

NPDC's Draft 10 Year Plan

Office Use Only: 7003

Submission No: 2882

Jenny Goddard

Wish to speak to the Council: No

Fixing our plumbing

How much should we invest in our plumbing over the next 10 years?

Option 3. Medium. Clear out the backlog and start making some improvements. \$140 million additional funding. NPDC's preferred option.

How do we pay for fixing our plumbing?

Option B: Partially debt fund long life assets to bridge the gap. NPDC's preferred option.

Saving water and water meters

Option 3: Medium. A middle of the range water saving plan, including water meters. This will cost \$50 million over 10 years while reducing new water supply assets, saving \$121 million over the long term. NPDC's preferred option.

Comments

Peoples demand for water is insatiable so water meters are the only sensible long term solution. Less water used means less going down the drains as well which also saves money on increasing stormwater collection assets. New Plymouth has lots of rain so rather than Council building expensive storage reservoirs, each resident can readily store a 1000 litres on their own site for non potable use. Many people in New Plymouth water their gardens to a ridiculous level. It would be very easy for most people to install a water tank collecting water off a section of their roof. This should be used for garden watering. Obviously it could also be used for toilet flushing etc but this requires more pipework and planning. Council has a role to play in encouraging new builds to include water storage irrespective of the reticulated supply being available. Water is gold- water meters will help us save it.

Improving stormwater management in Waitara

Option 2: Invest \$9 million over 10 years.

Extending our tracks and trails network

Option 2: Extend the Coastal Walkway from Bell Block to Waitara and develop further the Taranaki Traverse Mountain to Sea, costing \$36 million. NPDC's preferred option.

Comments

Worth every cent to our people and our reputation.

Boosting our Climate Action Framework

Option 2: Continue working on the CAF, implement Planting our Place costing \$200,000 per year and electrifying our NPDC vehicle fleet costing \$1 million over 10 years. Begin additional funding of \$150,000 per year for three years. NPDC's preferred option.

Comments

Keep at it. Its not easy or popular but it is the future.

Developing a multi-sport hub

Option 1: Do not develop a multi-sport hub.

Comments

I enjoy sport but we just can not have everything at once. Our sports people seem to still manage to produce stunning results even though the existing facilities might not be great. Struggle to see why the Rugby park redevelopment is going ahead when this multi sports hub is being talked about. A wasted opportunity for collaboration.

What else?

The CBD is looking very patchy and sad. Council is not the only driver but it has a vested interest in supporting the CBD. The development on the old Ravensdown site is not going to help. Any ideas and funds for assistance? Greater assistance is required for Owners of heritage buildings. Council can not expect retention and maintenance of these buildings if significant financial assistance is not available. All these initiatives increase rates which is tricky but despite that I support the increase.- there is no such thing as a free lunch. I know that many of our lowest income earners who are property owners qualify for government rates rebates .

NPDC's Draft 10 Year Plan

Office Use Only: 7005

Submission No: 2883

Bridget Johnston

Wish to speak to the Council: No

Fixing our plumbing

How much should we invest in our plumbing over the next 10 years?

Option 3. Medium. Clear out the backlog and start making some improvements. \$140 million additional funding. NPDC's preferred option.

How do we pay for fixing our plumbing?

Option B: Partially debt fund long life assets to bridge the gap. NPDC's preferred option.

Saving water and water meters

Option 3: Medium. A middle of the range water saving plan, including water meters. This will cost \$50 million over 10 years while reducing new water supply assets, saving \$121 million over the long term. NPDC's preferred option.

Comments

Water meters can help us to better manage water resources, but user-pays should not disadvantage the most financially vulnerable. NPDC or Community organisations (like Sustainable Taranaki) should support people in making water savings.

Improving stormwater management in Waitara

Option 3: Invest \$20 million over 10 years. NPDC's preferred option.

Comments

Waitara is a very low-lying community with many properties barely a couple of meters above sea-level. With a projected sea-level increase, Waitara will be extremely vulnerable in years to come, and a high-tide with a river flood is likely to have severe consequences for the community. I want the council to do more on climate change to protect coastal communities like Waitara.

Extending our tracks and trails network

Option 3: Option 2, plus give our tracks and trails network a boost over the next 10 years at a total cost of \$60 million.

Comments

The cultural aspects of any access in the National Park should be considered; the positions of mana whenua should be taken into account in this via active involvement. I support OPTION 3 provided there is a focus on active transport as a means to commute (school & work) in addition to recreational uses, by rebuilding our active and public transport networks.

Boosting our Climate Action Framework

Option 3: As per option 2, plus make the additional funding of \$150,000 per year permanent.

Comments

Significantly more resources should be allocated to the roll-out of the Climate Action Framework and Council should aim to be more transformational in its long-term vision and ambitions in this space. I want the council to resource groups like Sustainable Taranaki to deliver its education programs, establish community gardens and work on sustainable behavioural change in the community.

Developing a multi-sport hub

Option 3: Develop the hub and begin construction of the building faster, with work starting in year 4 and contributing \$40 million.

Comments

Any multi-sport hub needs to be built with all aspects of sustainability in mind (renewable, recyclable, local materials), especially climate change. It should be a low emissions building to achieve lower operating costs, designed for passive energy and light, etc. The layout should also favour low-emissions transport to the venue (not a huge car park) and integrate the proposed hub into the public transport network. Adding community gardens alongside the hub and an autonomous water collection and treatment facility should be considered.

What else?

I am concerned about large scale housing developments and smaller subdivisions for new builds, in relation to the pressure these place on existing water availability. I would like to see mandatory/compulsory rain-fed water tanks for every new dwelling to be part of having a consent granted.

NPDC's Draft 10 Year Plan

Office Use Only: 7019

Submission No: 2884

Karla Gibson

Wish to speak to the Council: No

Fixing our plumbing

How much should we invest in our plumbing over the next 10 years?

Option 3. Medium. Clear out the backlog and start making some improvements. \$140 million additional funding. NPDC's preferred option.

How do we pay for fixing our plumbing?

Option B: Partially debt fund long life assets to bridge the gap. NPDC's preferred option.

Saving water and water meters

Option 1: Do nothing. Status quo costing \$42 million over 10 years for new water supply assets. No water meters.

Comments

Water meters will further the divide between the haves and have nots.

Improving stormwater management in Waitara

Option 3: Invest \$20 million over 10 years. NPDC's preferred option.

Extending our tracks and trails network

Option 3: Option 2, plus give our tracks and trails network a boost over the next 10 years at a total cost of \$60 million.

Boosting our Climate Action Framework

Option 2: Continue working on the CAF, implement Planting our Place costing \$200,000 per year and electrifying our NPDC vehicle fleet costing \$1 million over 10 years. Begin additional funding of \$150,000 per year for three years. NPDC's preferred option.

Developing a multi-sport hub

Option 2: Develop the hub and begin construction of the building in year 6, contributing \$40 million. NPDC's preferred option.

What else?

Please read Inglewood Primary's schools submission.

NPDC's Draft 10 Year Plan

Office Use Only: 7020

Submission No: 2885

Michele

Wish to speak to the Council: No

Fixing our plumbing

How much should we invest in our plumbing over the next 10 years?

Option 3. Medium. Clear out the backlog and start making some improvements. \$140 million additional funding. NPDC's preferred option.

How do we pay for fixing our plumbing?

Option B: Partially debt fund long life assets to bridge the gap. NPDC's preferred option.

Comments

The council has not kept up with the infrastructure in New Plymouth and surrounding areas. More people have moved into the town more houses have been built, while the economy swells and times are good, seeing the tourists boost the spend. Money has been spent to cater for this but very little has changed for the growing population to accommodate the need for upgrades as it grows. Now we are told water meters are the way forward we are a greedy region using more water than others where was this advice as we were growing and the tourists were flooding in spending their money but using our water? We are a farming region in Taranaki are you going to meter every stream and every water source? You cannot put your finger in the hole in the dam and expect to hold the water back, plumbing like everything requires maintenance and updating, you service you car so it runs smoothly, this is ongoing, plans should have been in place before now, too little to late. We should not have to foot the bill for all of this, we should not have to have meters, we should definitely have a voice this was not created by us but by a lack of foresight and bad planning nobody ignores a blocked toilet do they? At the end of the street water runs almost constantly into the drain, It may be a natural spring I don't know but I do know that the grass is soaked and this precious resource that you are talking about to us is not harnessed it is just flowing down the drain. I am more worried about the quality of our water ways and the sewage that gets dumped into the streams every time there is a power outage, lets get the basics right first shall we?

Each council has had its chance dont tell me where I need to make changes until you have righted your own mistakes. Take the time to actually listen and go out and make changes that will help the community, look to your actions each one has an impact whether good or bad, actually mean for the good of the community not just speaking the words. We all want change and to keep this a beautiful country, some of us just mean it more than others though. To sum up what will the process be for businesses' with having water meters to help pay for the fixing of the plumbing or will it just be the everyday household rate payer who is footing the bill for what should have been planned and budgeted for,unfortuneatly theres seems to have been no five year plan.

Saving water and water meters

Comments

I have voiced all my comments before why keep saying the same thing ten different ways, re read last comment about fixing the plumbing if you need to know my stance on this.

Improving stormwater management in Waitara

Comments

as before this is all so behind and underwhelming with too little action to grow with a town that is still growing and expanding.

Extending our tracks and trails network

Comments

Are you really asking this? Of course we have to be green but not at the cost of life giving water lets stick to one thing at a time while maintaining and overseeing others.

Boosting our Climate Action Framework

Comments

I am not in a position to comment on this not because I'm not interested I just do not know enough.

Developing a multi-sport hub

Comments

I honestly think quality not quantity

What else?

If you can fulfil everything you have asked me to comment on without raising the rates to astronomical heights or implementing water meters then good on you, you have my admiration, but please refer to my comment about YOUR actions having an impact.

NPDC's Draft 10 Year Plan

Office Use Only: 7024

Submission No: 2886

Stacey Robinson

Wish to speak to the Council: Yes

Fixing our plumbing

How much should we invest in our plumbing over the next 10 years?

Option 4. High. Clear out the backlog and make significant improvements. \$229 million additional funding.

How do we pay for fixing our plumbing?

Option B: Partially debt fund long life assets to bridge the gap. NPDC's preferred option.

Comments

Saving water and water meters

Option 3: Medium. A middle of the range water saving plan, including water meters. This will cost \$50 million over 10 years while reducing new water supply assets, saving \$121 million over the long term. NPDC's preferred option.

Comments

I have concerns about charging people for water.

Improving stormwater management in Waitara

Option 3: Invest \$20 million over 10 years. NPDC's preferred option.

Comments

What about North Taranaki! Urenui needs your attention

Extending our tracks and trails network

Option 2: Extend the Coastal Walkway from Bell Block to Waitara and develop further the Taranaki Traverse Mountain to Sea, costing \$36 million. NPDC's preferred option.

Comments

North taranaki would appreciate some consideration here! A beautiful 5km track along the river would be wonderful!

Boosting our Climate Action Framework

Option 3: As per option 2, plus make the additional funding of \$150,000 per year permanent.

Comments

Please Plant urenu main street! its unbearably hot in the summer with NO shade. We would love shade trees like waitara has! Or beautiful natives

Developing a multi-sport hub

Option 2: Develop the hub and begin construction of the building in year 6, contributing \$40 million. NPDC's preferred option.

What else?

Town meeting notes, 2021

At the Corner Café we estimate that we see on average 50 customers a day during the off season in our business and many hundreds of customers each day during our summer busy period. Our customers are approximately 50% locals and 50% travellers. As one of the local hubs of the community, hundreds of locals stop in for a coffee and a chat - sharing their thoughts, feeling and wishes for the community with us on a daily basis. We feel like the below points are indicative of many of the people living in the area. In the past years we have seen council spending across our vibrant city benefit many communities – the Len Lye centre, Huatoki plaza and Yarrow stadium and mains septic connection to the people of Oakura to name just a few. The people of North Taranaki now kindly ask for your support and contribution to our community, specifically, we ask to be considered for the following investment in our community.

1. **WE WANT TO SWIM IN OUR RIVER!** The river is an importing part of our community and provides both leisure for us and a steady flow of custom to many of the business in the area. Our business has been impacted by the terrible condition of the river over summer with beach visitors significantly lower than previous years.
2. **WE WANT TO BE CONNECTED TO THE CITY'S SEPTIC SYSTEM!** This will enable development and provide part of the solution to 1. Above.
3. **WE WANT BETTER ACCESS TO LEISURE AND THE INCREDIBLE PLACE WE LIVE IN!** Specifically, we would love a 5km (or more) boardwalk walkway along our river. Starting at the bottom of Whakapaki street and snaking along the river (across the swingbridge) and continuing on along our beautiful awa. It is important that our rural community have access to leisure for our health and wellness.
4. **WE WANT SAFE AND CLEAN PUBLIC TOILETS ON THE MAIN STREET!** There are 2 main questions travellers ask: a. Where are the public toilets? b. Is there an electric charging station in the village? Our small café is licenced for takeaway only and we do not have the capacity to deal with the volume of people needing access to public facilities. The nearest toilet is 250m inland, off the main road at a playground. This makes the playground extremely transient in nature, so much so that locals will not send their children to play there by themselves because of safety concerns. It is also an inconvenient position for travellers and many simply do not stop and keep traveling – missing village and what we offer.
5. **WE WANT 2-4 ELECTRIC CHARGING STATIONS.** See above. The nearest charging station is at the Warehouse in Bell Block.
6. **WE WANT EASY PARKING FOR CUSTOMERS SO WE CAN GROW LOCAL BUSINESS.** We have identified Murphy's Gully on Whakapaki Street as a possible ideal location for this.

NPDC's Draft 10 Year Plan

Office Use Only: 7026

Submission No: 2887

Rhonda Norden

Wish to speak to the Council: No

Fixing our plumbing

How much should we invest in our plumbing over the next 10 years?

Option 3: Medium. Clear out the backlog and start making some improvements. \$140 million additional funding. NPDC's preferred option.

How do we pay for fixing our plumbing?

Option B: Partially debt fund long life assets to bridge the gap. NPDC's preferred option.

Saving water and water meters

Option 3: Medium. A middle of the range water saving plan, including water meters. This will cost \$50 million over 10 years while reducing new water supply assets, saving \$121 million over the long term. NPDC's preferred option.

Improving stormwater management in Waitara

Option 2: Invest \$9 million over 10 years.

Extending our tracks and trails network

Option 1: Do nothing. Status quo. No new or additional investment in tracks and trails.

Boosting our Climate Action Framework

Option 1: Do nothing. Status quo. Continue working on the CAF but no new actions or additional funding.

Developing a multi-sport hub

Option 3: Develop the hub and begin construction of the building faster, with work starting in year 4 and contributing \$40 million.

NPDC's Draft 10 Year Plan

Office Use Only: 7027

Submission No: 2888

Ramesh Satrasala

Wish to speak to the Council: No

Fixing our plumbing

How much should we invest in our plumbing over the next 10 years?

Option 3. Medium. Clear out the backlog and start making some improvements. \$140 million additional funding. NPDC's preferred option.

How do we pay for fixing our plumbing?

Option B: Partially debt fund long life assets to bridge the gap. NPDC's preferred option.

Saving water and water meters

Option 3: Medium. A middle of the range water saving plan, including water meters. This will cost \$50 million over 10 years while reducing new water supply assets, saving \$121 million over the long term. NPDC's preferred option.

Improving stormwater management in Waitara

Option 3: Invest \$20 million over 10 years. NPDC's preferred option.

Extending our tracks and trails network

Option 2: Extend the Coastal Walkway from Bell Block to Waitara and develop further the Taranaki Traverse Mountain to Sea, costing \$36 million. NPDC's preferred option.

Boosting our Climate Action Framework

Option 2: Continue working on the CAF, implement Planting our Place costing \$200,000 per year and electrifying our NPDC vehicle fleet costing \$1 million over 10 years. Begin additional funding of \$150,000 per year for three years. NPDC's preferred option.

Developing a multi-sport hub

Option 1: Do not develop a multi-sport hub.

What else?

Egmont Rd intersection and bellblock bypass both require traffic lights especially during peak hours.

NPDC's Draft 10 Year Plan

Office Use Only: 7028

Submission No: 2889

Kathy Hopkins

Wish to speak to the Council: No

Fixing our plumbing

How much should we invest in our plumbing over the next 10 years?

Option 2. Low. Start chipping away at the backlog so that it grows more slowly. \$78 million additional funding.

How do we pay for fixing our plumbing?

Option A: Pay for it from rates

Saving water and water meters

Option 2: Low. Introduce a water saving plan, including water meters. This will cost \$45 million over 10 years while reducing new water supply assets, saving \$62 million over the long term.

Comments

If our city grows we haven't got enough water in local streams. The Waiwhakaiho barely run in the dry period. Water is a precious resource and with the hydrogen development and this taking water to make energy there is going to be less water available Water is needed for food production and residents should be encouraged to grow there own food. Encourage self sufficiency. I was very disappointed the council have decided not to help people store their own water of their roof which could help towards less storm water for the council to deal with. People could use this .on there garden and produce food.

Improving stormwater management in Waitara

Option 1: Do nothing. No additional investment in Waitara stormwater.

Comments

A huge lot of flood protection has already been done. Encourage development out of the flood zone. Fighting nature usually fails

Extending our tracks and trails network

Option 1: Do nothing. Status quo. No new or additional investment in tracks and trails.

Comments

the walkways we have a great. These are difficult times elsewhere in the world with economic down turn - not the time to put more debt on local citizens many of whom are finding times tough. Covid overseas and many companys finding it hard to get supplies. No more debt for the district. We have a len lye centre which is costly to keep open and the debt of an airport terminal way beyond what was need. Just an example of out of control spending

Boosting our Climate Action Framework

Option 1: Do nothing. Status quo. Continue working on the CAF but no new actions or additional funding.

Comments

Council plans to plant grazing reserves 17 hectares which are already 'Green' as grazing block. By planting trees these pieces of land they will become waste areas where people see it as a area to dump waste. Often they are area where storm water pipes are and some of it will not be suitable for trees. These will not be used by local people and will become no go areas which will cost the council to maintain. Keeping weeds under control. I have seen this with a local grazing lease. The council already has 1,600 hectares which is a huge area of GREEN. Grazing blocks have had their rents increased to market rental so they earn money for the council. These also do not cost the council to maintain these green areas. They also provide animals for resident to enjoy over the fence. The council wants to spend 4 million on improving the Zoo at the park when there are local areas of animals for locals to enjoy provide by local. The council provides a small area of their 1,600 hectares at lake Mangamahoe for horse riding. Would be great if there were other locations of forestry where horses were allowed. The council would then be encouraging outdoor activities for locals. Forestry areas do require maintenance, and weed control. Management of the size of trees around the margins and access lanes. I think the council should slowly replace their fleet with electric vehicles.

Developing a multi-sport hub

Option 1: Do not develop a multi-sport hub.

Comments

The world outside New Zealand is struggling. It is time to step back and only spend what we have to. We don't need Grand Plans. I know Town Planners are employed and need something to do but. Not the time to burden the rate payers with more debt. Covid or world epidemics may not be able to be conquered. Our world may have changed for ever. Recently in Reefton I read a local paper and the locals were upset their rates were rising from \$400 to \$600. Our rates are expensive enough. The Rates increase is going to go onto rents which make it harder for the less privileged/low social economic/ perhaps Maori.. These rental are expensive enough. The cost of buying houses in the town in the last year have increased hugely probably \$100,000. The council is going to receive a high rates return because rateable values will have increased but the council does not mention this anywhere. We have netball courts at Waihakaiho which could be used more economically perhaps every day, not just a few hours a week in the winter time. There is a huge car park which is locked which could otherwise be used for market places or a car market, even one day a week? We don't want to loose the race course which is beautiful to drive on past. Everybody delight in passing. Once it is gone it can not be recovered. The council is keen for green areas and yet it want develop this area. It is a contradiction. Concrete or asphalt require drainage. Areas where a huge lot of people congregate require carparks, toilets, extra roading on our main route into town, congestion which all costs money to maintain which the council does not have.

Put up the prices of facilities (ie the swimming pools) which you do have and they are then not available to everyone. Facilities should not be funded by the council and then only available to a small group/or the rich Tell elderly people 'we need to pay it forward.' We won't be using these facilities because we won't be able to afford to. Older people on super- annuation don't have spare money The estimate cost of \$91 million could be double that by the time it is finished. User pays-- but will they.? The race horse industry contributes to the local economy, race days, provide jobs, local employment, entertainment, riders, stable hands, coaches, vets, horse feed firms horse careers for those inflicted by horse craze. The area provides a base for local pony clubs and horse events. Please keep the race course as is. We need a 'green field' approach. The council is keen to plant trees but trees take looking after and don't provide space. Save the precious inner-city green space for young and old

What else?

I was disappointed to have to sit through Regenerative Agriculture brain washing session to be able to hear the council public meeting on the 10year plan. Senior people probably aren't involve in agriculture. Probably have very small gardens and won't be gardening using white wood chips and molasses. They were there to hear the councils plan. Green energy of Hydrogen requires H₂O which is water. Water is require to be able to produce hydrogen which is thought to help replace our fossil fuels. The three waters are the highest priority for the council. Lets get back to basics.

NPDC's Draft 10 Year Plan

Office Use Only: 7029

Submission No: 2890

Tash

Wish to speak to the Council: No

Fixing our plumbing

How much should we invest in our plumbing over the next 10 years?

Option 3. Medium. Clear out the backlog and start making some improvements. \$140 million additional funding. NPDC's preferred option.

How do we pay for fixing our plumbing?

Option B: Partially debt fund long life assets to bridge the gap. NPDC's preferred option.

Saving water and water meters

Option 1: Do nothing. Status quo costing \$42 million over 10 years for new water supply assets. No water meters.

Comments

We live in an area with huge annual rainfall. Rural homes have been using water tanks for years?? I have one. legislate to make installing underground or above ground water tanks with every new build? All Commercial properties must have water tanks installed to collect rainfall off their roofs. Including council buildings... Offer interest free loans to ratepayers that have existing homes to install a water tank. Im sure tanks could be sourced at a discounted price for a local contract. Rates rebates to people with water tanks. People that don't want a water tank option, must have a water meter installed instead. Subdivisions could have a large communal tank put in to collect rainwater for grey water use. eg not potable water options.

Improving stormwater management in Waitara

Option 3: Invest \$20 million over 10 years. NPDC's preferred option.

Comments

Sort this out, must be very unpleasant for the people in these homes.

Extending our tracks and trails network

Option 3: Option 2, plus give our tracks and trails network a boost over the next 10 years at a total cost of \$60 million.

Comments

Reading the consultation document. in theory this is a great idea. But practicality in costs for implementing this and then maintaining these new plantings to a high standard has been grossly underestimated. Our green areas are the joy and pride of our district, please do not undervalue the amount of work and people it will take to look after it.

Boosting our Climate Action Framework

Option 3: As per option 2, plus make the additional funding of \$150,000 per year permanent.

Comments

You will need a lot more additional funding than budgeted for if you want this to be feasible and successful. As the planting process is only the beginning it will need maintaining for years until established and then it will still need managing for eternity to keep pristine. Worth the extra money to have something to be proud of. Again do not undervalue the investment in keeping this project looked after well.

Developing a multi-sport hub

Option 1: Do not develop a multi-sport hub.

Comments

Don't need it, we have so many sports facilities and fields already.

What else?

Thank you for the opportunity to have my say. I am excited to see the walkway extensions going ahead, it has proven itself a success. Cant go wrong there. I am born and breed in Taranaki and am very proud of our district. One last note. Please also look into our roads, I drive the Stratford to NP one every day and its really really bad. thanks

NPDC's Draft 10 Year Plan

Office Use Only: 7030

Submission No: 2891

Julie

Wish to speak to the Council: No

Fixing our plumbing

How much should we invest in our plumbing over the next 10 years?

Option 3. Medium. Clear out the backlog and start making some improvements. \$140 million additional funding. NPDC's preferred option.

How do we pay for fixing our plumbing?

Option B: Partially debt fund long life assets to bridge the gap. NPDC's preferred option.

Comments

I feel fixing our plumbing is most important, but I also think NPDC should require new builds to have some sort of water storage from rainfall to take the pressure off our already overworked system that was not built to cope with all the extra housing etc.

Saving water and water meters

Option 3: Medium. A middle of the range water saving plan, including water meters. This will cost \$50 million over 10 years while reducing new water supply assets, saving \$121 million over the long term. NPDC's preferred option.

Improving stormwater management in Waitara

Option 3: Invest \$20 million over 10 years. NPDC's preferred option.

Extending our tracks and trails network

Option 1: Do nothing. Status quo. No new or additional investment in tracks and trails.

Boosting our Climate Action Framework

Comments

Developing a multi-sport hub

Option 2: Develop the hub and begin construction of the building in year 6, contributing \$40 million. NPDC's preferred option.

NPDC's Draft 10 Year Plan

Office Use Only: 7031

Submission No: 2892

Dion Cowley

Wish to speak to the Council: No

Fixing our plumbing

How much should we invest in our plumbing over the next 10 years?

Option 3: Medium. Clear out the backlog and start making some improvements. \$140 million additional funding. NPDC's preferred option.

How do we pay for fixing our plumbing?

Option B: Partially debt fund long life assets to bridge the gap. NPDC's preferred option.

Saving water and water meters

Option 3: Medium. A middle of the range water saving plan, including water meters. This will cost \$50 million over 10 years while reducing new water supply assets, saving \$121 million over the long term. NPDC's preferred option.

Improving stormwater management in Waitara

Option 2: Invest \$9 million over 10 years.

Extending our tracks and trails network

Option 3: Option 2, plus give our tracks and trails network a boost over the next 10 years at a total cost of \$60 million.

Boosting our Climate Action Framework

Option 3: As per option 2, plus make the additional funding of \$150,000 per year permanent.

Developing a multi-sport hub

Option 3: Develop the hub and begin construction of the building faster, with work starting in year 4 and contributing \$40 million.

NPDC's Draft 10 Year Plan

Office Use Only: 7032

Submission No: 2893

Tracy Cowley

Wish to speak to the Council: No

Fixing our plumbing

How much should we invest in our plumbing over the next 10 years?

Option 3. Medium. Clear out the backlog and start making some improvements. \$140 million additional funding. NPDC's preferred option.

How do we pay for fixing our plumbing?

Option B: Partially debt fund long life assets to bridge the gap. NPDC's preferred option.

Saving water and water meters

Option 3: Medium. A middle of the range water saving plan, including water meters. This will cost \$50 million over 10 years while reducing new water supply assets, saving \$121 million over the long term. NPDC's preferred option.

Improving stormwater management in Waitara

Option 1: Do nothing. No additional investment in Waitara stormwater.

Comments

You're fighting against a global problem. Waters will rise. This is not the way to spend our money.

Extending our tracks and trails network

Option 2: Extend the Coastal Walkway from Bell Block to Waitara and develop further the Taranaki Traverse Mountain to Sea, costing \$36 million. NPDC's preferred option.

Boosting our Climate Action Framework

Option 3: As per option 2, plus make the additional funding of \$150,000 per year permanent.

Developing a multi-sport hub

Option 2: Develop the hub and begin construction of the building in year 6, contributing \$40 million. NPDC's preferred option.

What else?

Not all of us are scared of rates increases. I am happy to pay more to live in a great place. I believe in investing in our infrastructure so we see return in economy, tourism benefits and less firefighting of broken resources. Also, great work guys Thanks.

NPDC's Draft 10 Year Plan

Office Use Only: 7033

Submission No: 2894

Jarrold See

Wish to speak to the Council: No

Fixing our plumbing

How much should we invest in our plumbing over the next 10 years?

Option 3: Medium. Clear out the backlog and start making some improvements. \$140 million additional funding. NPDC's preferred option.

How do we pay for fixing our plumbing?

Option B: Partially debt fund long life assets to bridge the gap. NPDC's preferred option.

Saving water and water meters

Option 3: Medium. A middle of the range water saving plan, including water meters. This will cost \$50 million over 10 years while reducing new water supply assets, saving \$121 million over the long term. NPDC's preferred option.

Improving stormwater management in Waitara

Option 2: Invest \$9 million over 10 years.

Extending our tracks and trails network

Option 2: Extend the Coastal Walkway from Bell Block to Waitara and develop further the Taranaki Traverse Mountain to Sea, costing \$36 million. NPDC's preferred option.

Boosting our Climate Action Framework

Option 2: Continue working on the CAF, implement Planting our Place costing \$200,000 per year and electrifying our NPDC vehicle fleet costing \$1 million over 10 years. Begin additional funding of \$150,000 per year for three years. NPDC's preferred option.

Developing a multi-sport hub

Option 2: Develop the hub and begin construction of the building in year 6, contributing \$40 million. NPDC's preferred option.

NPDC's Draft 10 Year Plan

Office Use Only: 7035

Submission No: 2895

Stacey

Wish to speak to the Council: No

Fixing our plumbing

How much should we invest in our plumbing over the next 10 years?

Option 3. Medium. Clear out the backlog and start making some improvements. \$140 million additional funding. NPDC's preferred option.

How do we pay for fixing our plumbing?

Option B: Partially debt fund long life assets to bridge the gap. NPDC's preferred option.

Saving water and water meters

Option 3: Medium. A middle of the range water saving plan, including water meters. This will cost \$50 million over 10 years while reducing new water supply assets, saving \$121 million over the long term. NPDC's preferred option.

Comments

There is no mention about the fact that the proposal says rates go up, yet will no longer include water, sine we'd be paying of that separately based on usage as per meter readings. So we are paying more for not getting the water services we are supposedly paying for anyway? Please can you make this more clear? Also I'm assuming these rate rises each year are percentage rises from the previous year, not just percentage rises from this year?

Improving stormwater management in Waitara

Option 2: Invest \$9 million over 10 years.

Comments

This is very important, there is definitely room for some money to spent I waitara, especially given the rise in people living in that area and it becoming a much closer suburb to New Plymouth.

Extending our tracks and trails network

Option 2: Extend the Coastal Walkway from Bell Block to Waitara and develop further the Taranaki Traverse Mountain to Sea, costing \$36 million. NPDC's preferred option.

Comments

There has been a lot of new infrastructure in parks and walkways. I think connecting waitara should be a priority to give people there the option to commute via that, instead of the increasingly terrible traffic on a dangerous road. Save the then necessary huge cost of further road development beyond what is already planned.

Boosting our Climate Action Framework

Option 2: Continue working on the CAF, implement Planting our Place costing \$200,000 per year and electrifying our NPDC vehicle fleet costing \$1 million over 10 years. Begin additional funding of \$150,000 per year for three years. NPDC's preferred option.

Comments

Interesting that there is no option for trees and education, without new cars for council. Why not use technology more for meetings etc, as you've proven is very possible during the commuting challenges, And keep your current fleet for a little longer? Understand the desire for lower emissions, but keeping the current fleet for longer would create lower emissions than the consumerism of buying new cars to update cars that are not outdated.

Developing a multi-sport hub

Option 3: Develop the hub and begin construction of the building faster, with work starting in year 4 and contributing \$40 million.

Comments

Again, there are facilities that are not used to their max capacity. Waitara, Bell Block, Inglewood have fields that are not used often and could benefit from some upgrading and new facilities. Why not put a couple of turfs in those places to spread people about more. Many come from Those places anyway. So yes, spend some money, but less of it And in more locations.

NPDC's Draft 10 Year Plan

Office Use Only: 7041

Submission No: 2896

Josh Smaller

Wish to speak to the Council: No

Fixing our plumbing

How much should we invest in our plumbing over the next 10 years?

Option 3. Medium. Clear out the backlog and start making some improvements. \$140 million additional funding. NPDC's preferred option.

How do we pay for fixing our plumbing?

Option C: Fully debt fund long life assets.

Saving water and water meters

Option 1: Do nothing. Status quo costing \$42 million over 10 years for new water supply assets. No water meters.

Improving stormwater management in Waitara

Option 2: Invest \$9 million over 10 years.

Extending our tracks and trails network

Option 2: Extend the Coastal Walkway from Bell Block to Waitara and develop further the Taranaki Traverse Mountain to Sea, costing \$36 million. NPDC's preferred option.

Boosting our Climate Action Framework

Option 1: Do nothing. Status quo. Continue working on the CAF but no new actions or additional funding.

Developing a multi-sport hub

Option 2: Develop the hub and begin construction of the building in year 6, contributing \$40 million. NPDC's preferred option.

NPDC's Draft 10 Year Plan

Office Use Only: 7043

Submission No: 2897

Sarah Hosie

Wish to speak to the Council: No

Fixing our plumbing

How much should we invest in our plumbing over the next 10 years?

Option 3. Medium. Clear out the backlog and start making some improvements. \$140 million additional funding. NPDC's preferred option.

How do we pay for fixing our plumbing?

Option A: Pay for it from rates

Saving water and water meters

Option 1: Do nothing. Status quo costing \$42 million over 10 years for new water supply assets. No water meters.

Improving stormwater management in Waitara

Option 3: Invest \$20 million over 10 years. NPDC's preferred option.

Extending our tracks and trails network

Option 2: Extend the Coastal Walkway from Bell Block to Waitara and develop further the Taranaki Traverse Mountain to Sea, costing \$36 million. NPDC's preferred option.

Boosting our Climate Action Framework

Option 2: Continue working on the CAF, implement Planting our Place costing \$200,000 per year and electrifying our NPDC vehicle fleet costing \$1 million over 10 years. Begin additional funding of \$150,000 per year for three years. NPDC's preferred option.

Developing a multi-sport hub

Option 2: Develop the hub and begin construction of the building in year 6, contributing \$40 million. NPDC's preferred option.

NPDC's Draft 10 Year Plan

Office Use Only: 7046

Submission No: 2898

Brian

Wish to speak to the Council: No

Fixing our plumbing

How much should we invest in our plumbing over the next 10 years?

Option 4. High. Clear out the backlog and make significant improvements. \$229 million additional funding.

How do we pay for fixing our plumbing?

Option C: Fully debt fund long life assets.

Saving water and water meters

Option 2: Low. Introduce a water saving plan, including water meters. This will cost \$45 million over 10 years while reducing new water supply assets, saving \$62 million over the long term.

Comments

If you go for meters and charging are you reducing the fixed water component in the current rates?

Improving stormwater management in Waitara

Option 3: Invest \$20 million over 10 years. NPDC's preferred option.

Extending our tracks and trails network

Option 1: Do nothing. Status quo. No new or additional investment in tracks and trails.

Comments

fix infrastructure first

Boosting our Climate Action Framework

Option 1: Do nothing. Status quo. Continue working on the CAF but no new actions or additional funding.

Comments

fix infrastructure first

Developing a multi-sport hub

Option 3: Develop the hub and begin construction of the building faster, with work starting in year 4 and contributing \$40 million.

Comments

end the racing lease

What else?

infrastructure first. the 'passion' projects are fine but infrastructure is a priority.

NPDC's Draft 10 Year Plan

Office Use Only: 7050

Submission No: 2899

Amy

Wish to speak to the Council: No

Fixing our plumbing

How much should we invest in our plumbing over the next 10 years?

Option 2. Low. Start chipping away at the backlog so that it grows more slowly. \$78 million additional funding.

How do we pay for fixing our plumbing?

Option C: Fully debt fund long life assets.

Saving water and water meters

Option 3: Medium. A middle of the range water saving plan, including water meters. This will cost \$50 million over 10 years while reducing new water supply assets, saving \$121 million over the long term. NPDC's preferred option.

Improving stormwater management in Waitara

Option 2: Invest \$9 million over 10 years.

Extending our tracks and trails network

Option 1: Do nothing. Status quo. No new or additional investment in tracks and trails.

Boosting our Climate Action Framework

Option 1: Do nothing. Status quo. Continue working on the CAF but no new actions or additional funding.

Developing a multi-sport hub

Option 1: Do not develop a multi-sport hub.

NPDC's Draft 10 Year Plan

Office Use Only: 7052

Submission No: 2900

Andrew French

Wish to speak to the Council: No

Fixing our plumbing

How much should we invest in our plumbing over the next 10 years?

Option 3. Medium. Clear out the backlog and start making some improvements. \$140 million additional funding. NPDC's preferred option.

How do we pay for fixing our plumbing?

Option B: Partially debt fund long life assets to bridge the gap. NPDC's preferred option.

Comments

Sewerage in our oceans impacts on the environment. maybe supporting alternative systems in consents, eg grey water systems that flow into plants and gardens etc...

Saving water and water meters

Option 4: High. A significant water saving plan, including water meters. This will cost \$56 million over 10 years while reducing new water supply assets, saving \$120 million over the long term.

Comments

Should be options for low income households to reduce their contribution through lower charges based on income.

Improving stormwater management in Waitara

Option 3: Invest \$20 million over 10 years. NPDC's preferred option.

Extending our tracks and trails network

Option 2: Extend the Coastal Walkway from Bell Block to Waitara and develop further the Taranaki Traverse Mountain to Sea, costing \$36 million. NPDC's preferred option.

Comments

How about making sure some or equal investment is south/ south west of the city and port, not just to all the wealthier suburbs and developments in Bellblock etc...

Boosting our Climate Action Framework

Option 3: As per option 2, plus make the additional funding of \$150,000 per year permanent.

Comments

Got to be one of the most important concerns for our future.

Developing a multi-sport hub

Option 1: Do not develop a multi-sport hub.
