

6.24 Te Kowhai Street Reserve

Description

Location:	Cnr Rata and Konini Streets, Inglewood
Legal description:	Lot 2 DP11004
Size:	0.42 ha
Reserve status:	Reserve



Physical description

This reserve is predominately flat with a wetland in the middle. The wetland has been planted with a number of native species. Both the fringe of the wetland and the western boundary also have attractive amenity plantings.

Tangata whenua interests

This reserve is within the tribal rohe of Te Atiawa Iwi. The area is of historic and cultural significance to Pukerangiora and Puketapu.

Land status and history

It was resolved to purchase this land at a Special Meeting of the Inglewood Borough Council on the 8th September 1964. The land was purchased in 1965 for £5310.

Existing improvements

The reserve is landscaped with amenity gardens and wetland planting. A playground and picnic tables exist.

Uses and activities

This reserve provides amenity value to the area and is suitable for picnicking, child's play and other passive recreation.

Classification

Recreation

Management objectives and specific policies

- This reserve will continue to be maintained and developed as an open space area suitable for child's play and casual recreation.

Visual Resource Key







Landscape/Spatial Features

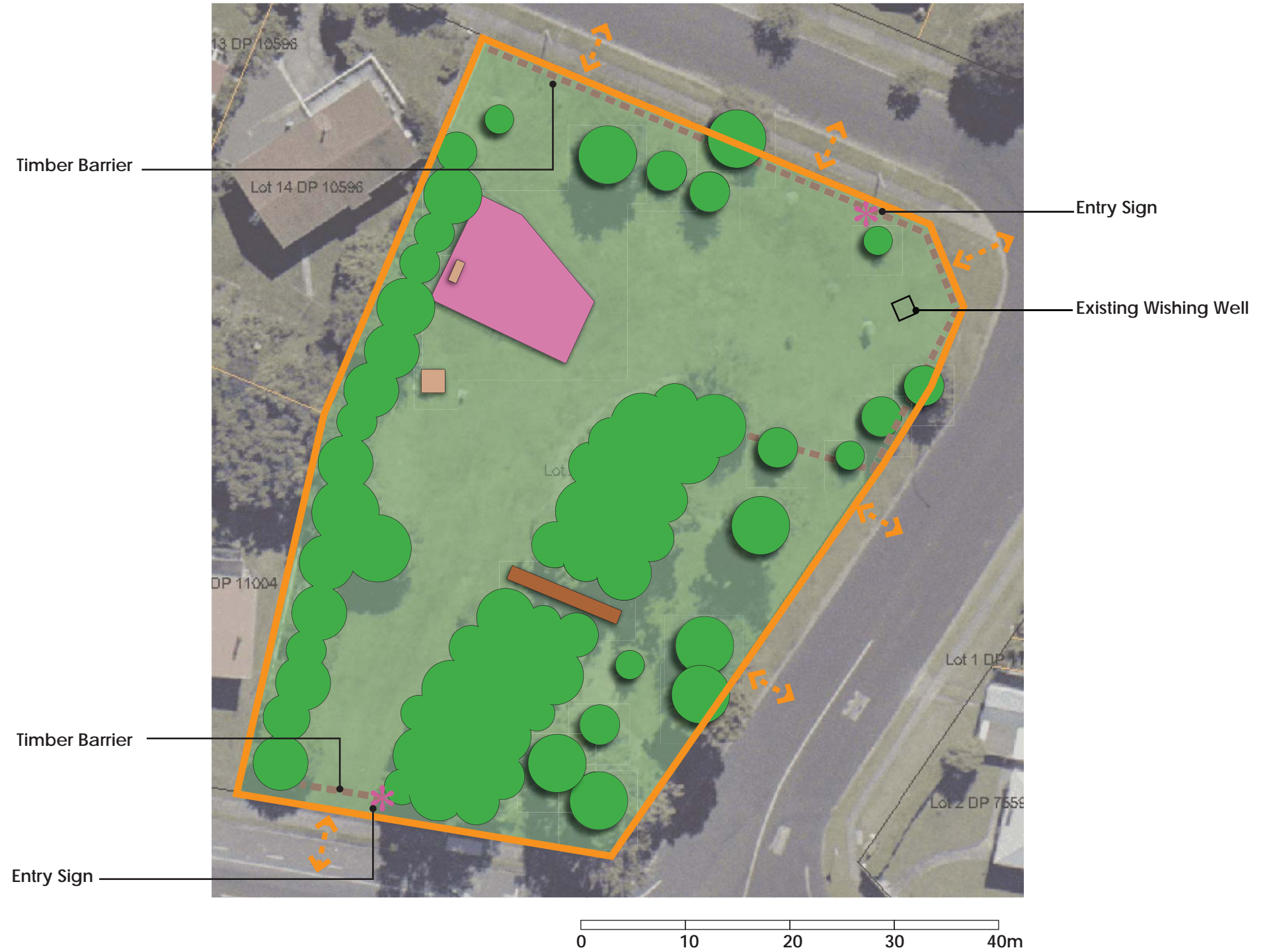
-  Land Parcel
-  Mown Open Space
-  Entry Points

Vegetation

-  Existing Trees/Vegetation

Structures

-  Pedestrian Entry Sign
-  Existing Seat
-  Existing Picnic Table
-  Existing Play Equipment
-  Existing Bridge
-  Proposed Bollards





Landscape Context Key

Landscape Features

-  Stream

Spatial Features

-  Reserve Land
-  Surrounding Open Space/Reserves/Sports Fields



Te Kowhai Reserve Development Concept Corner Kowhai/Konini/Rata Streets, Inglewood

 Richard Bain Landscape Architects

 NEW PLYMOUTH DISTRICT COUNCIL
newplymouthnz.com